



Boia de nível magnética 207KS

A Bóia de Nível Magnética 207KS montada com dobradiça mecânica é ideal para uso em aplicações que requerem monitoramento confiável em fluxos volumosos. Está disponível em duas opções de montagem diferentes, portanto é mais flexível e se adapta a vários tipos de uso, como por exemplo o monitoramento de nível em recipientes de tratamento de água, equipamentos móbil, controle de processos industriais e construção civil. A Bóia de Nível pode ser montada com borracha de compressão, o que permite que seja instalada também do lado de fora. Rotacionando o sensor é possível reverter o sentido de acionamento do sensor, se tornando uma solução altamente flexível e econômica.

Especificação Técnica

- Sensor de nível baseado em sensores magnéticos (reed)
- Dobradiça mecânica para aplicação em elevado fluxo de líquidos
- Material: PP ou PA12
- Montagem: rosca NPT ou borracha de compressão
- Conexões disponíveis: tomada, conector M12 e cabo pigtail
- Tipo de contato: NA, NF ou changeover
- Temperatura de trabalho de -25 °C até +105 °C
- Tensão máx. 250V
- Classe de proteção IP67

Desenho técnico

IMAGE 1/12

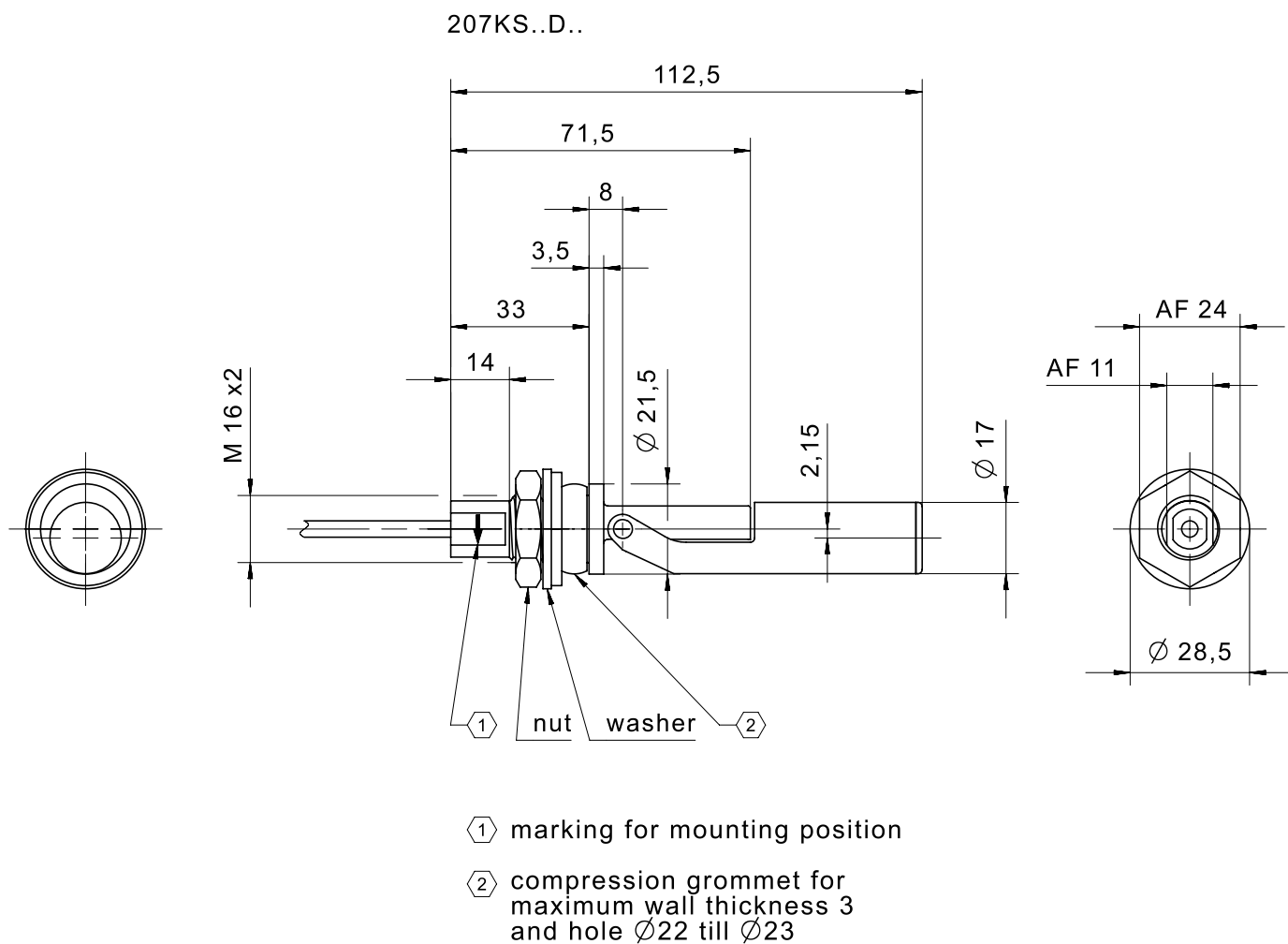


IMAGE 2/12

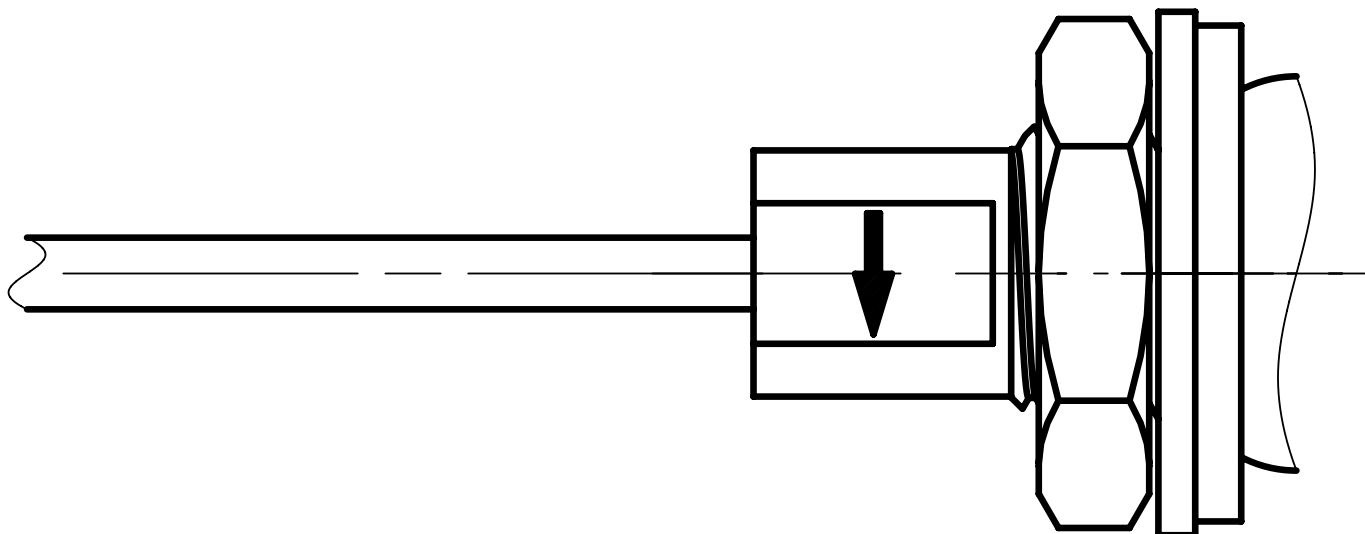
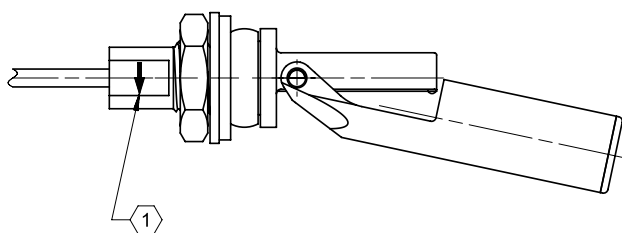


IMAGE 3/12



207KS0.D.....
207KS1.D.....

BN ———— WH

207KS2.D.....

BN ———— GN
 WH



207KS0.D.....
207KS1.D.....

BN ———— WH

207KS2.D.....

BN ———— GN
 WH

IMAGE 4/12

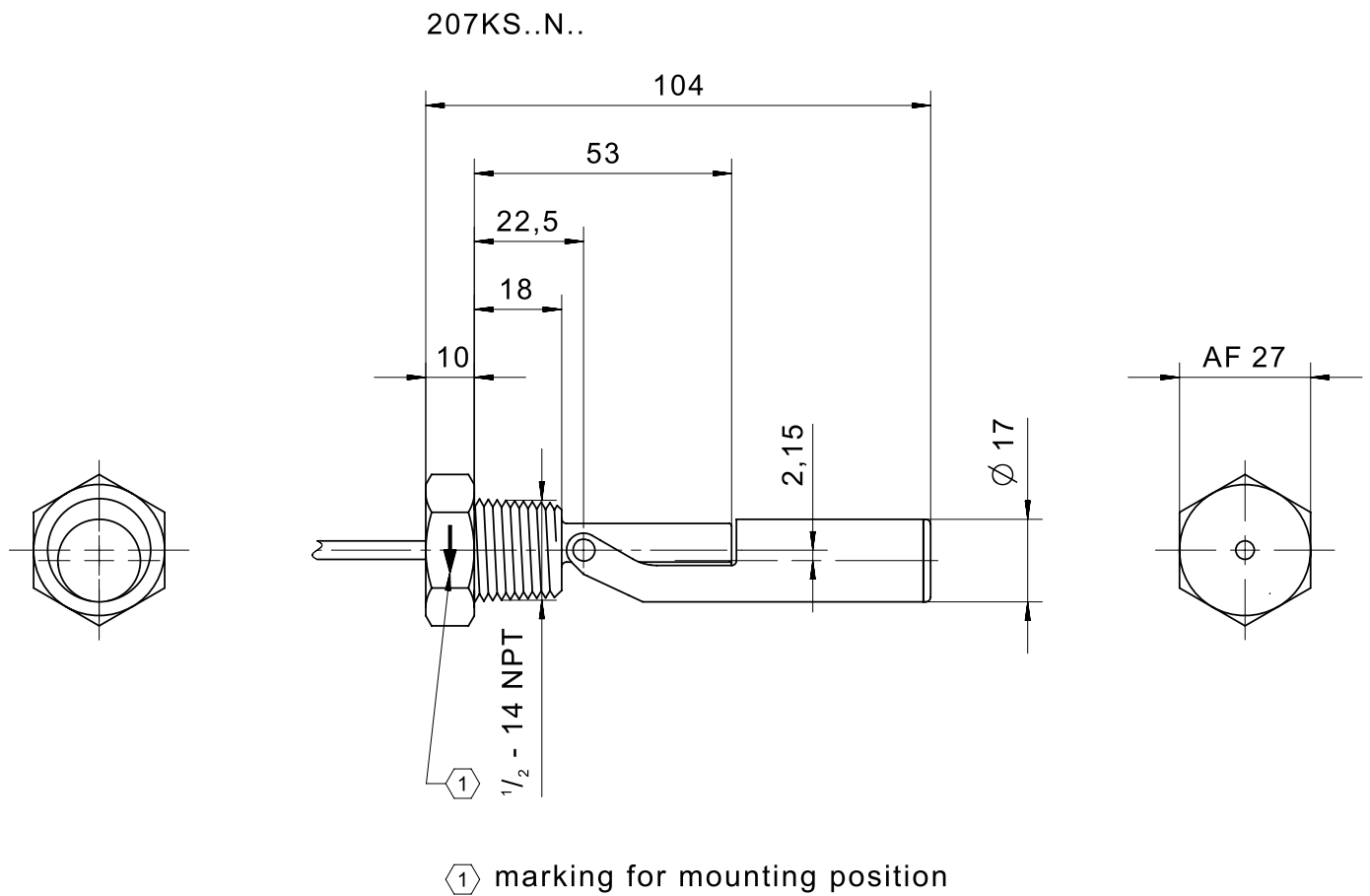
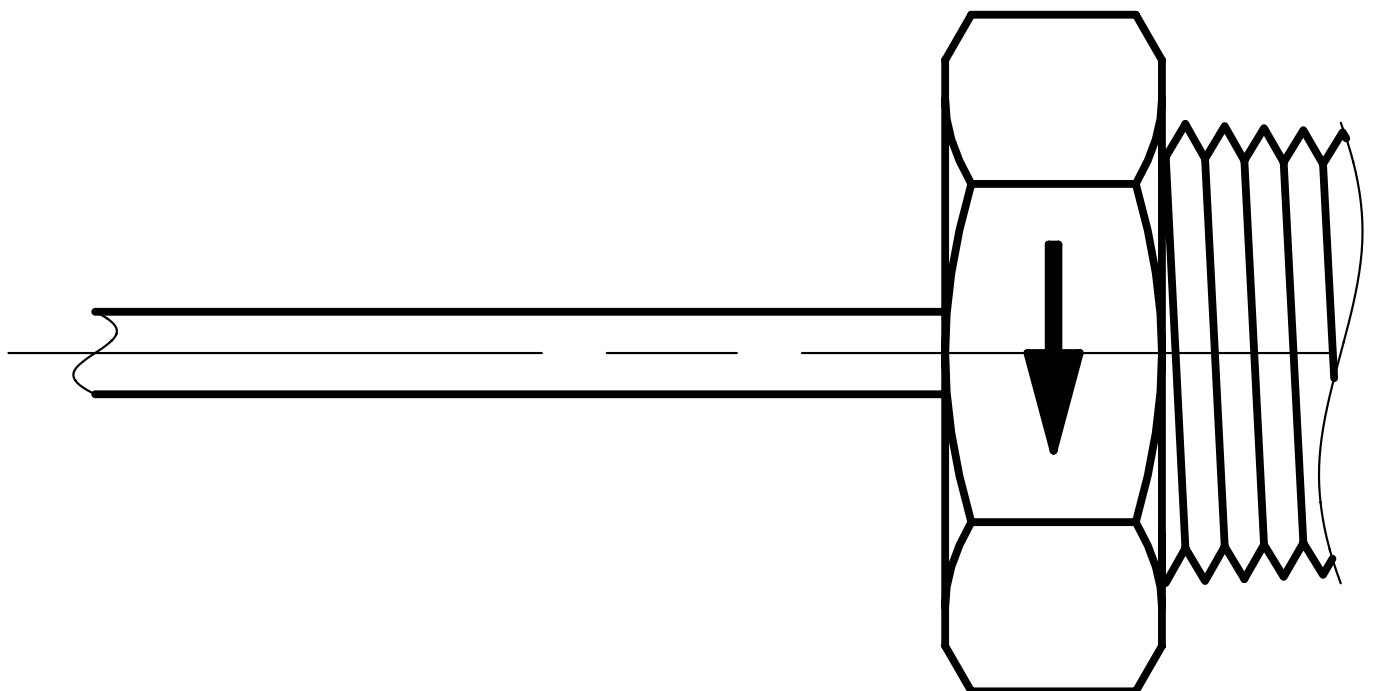
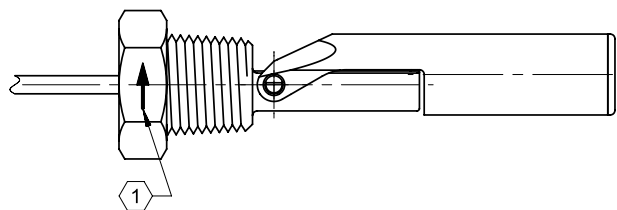


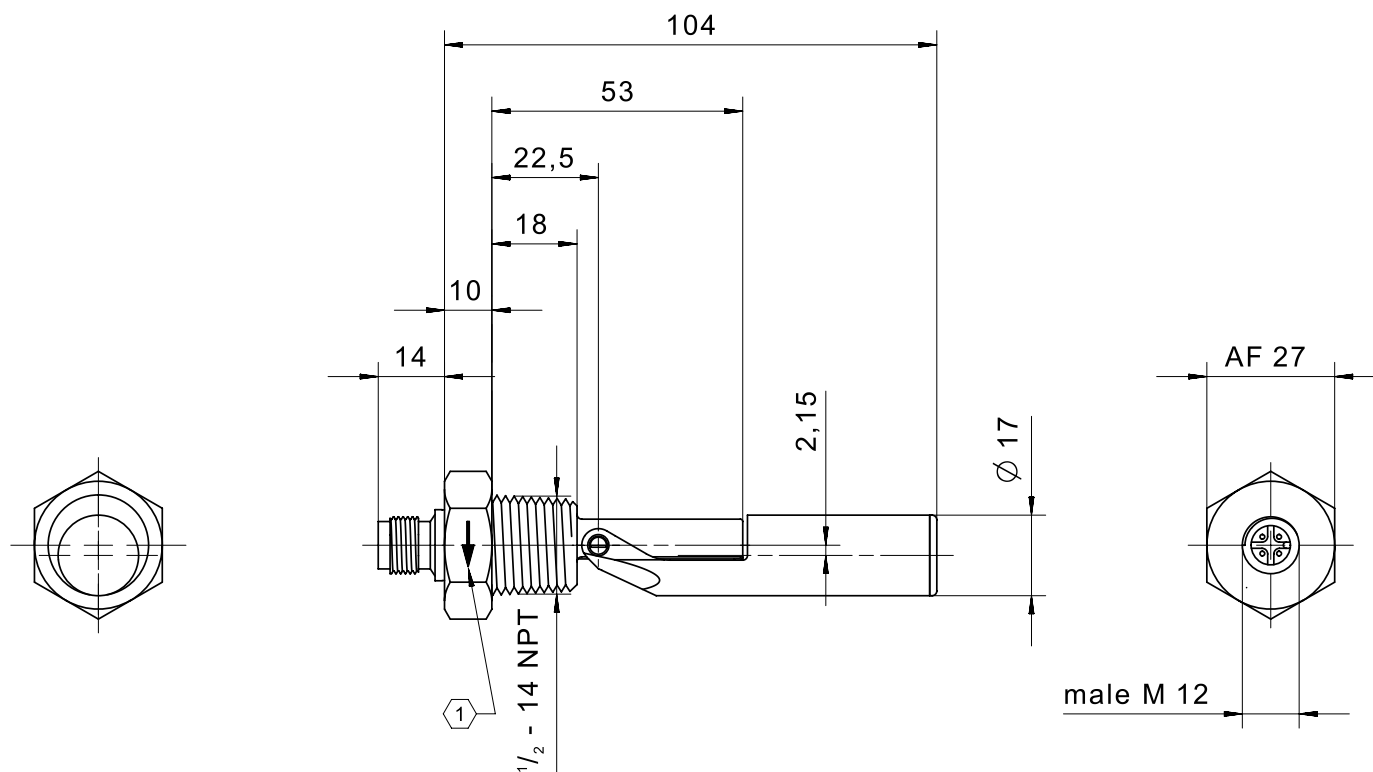
IMAGE 5/12



A technical line drawing of a bolt and nut assembly. The bolt is horizontal, with a hexagonal head on the left and a threaded shaft extending to the right. A nut is threaded onto the bolt's shaft. A callout line with the number '1' inside a hexagon points to the nut. The nut has a hexagonal shape with a central hole and a smaller hole on its side. The bolt's head has a central hole and a smaller hole on its side. The bolt's shaft has a central hole and a smaller hole on its side.



207KS14N05



① marking for mounting position

IMAGE 8/12

male M12

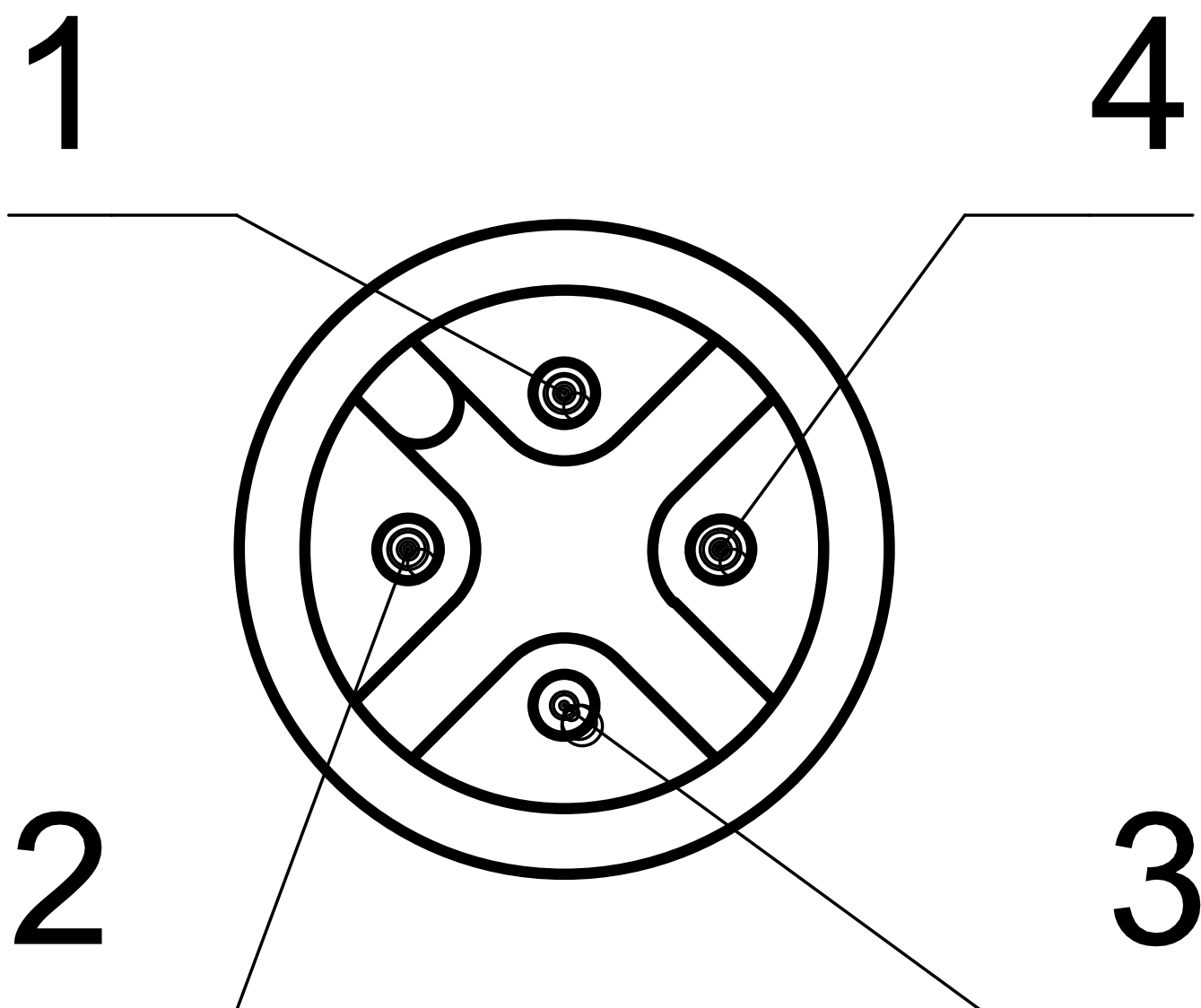
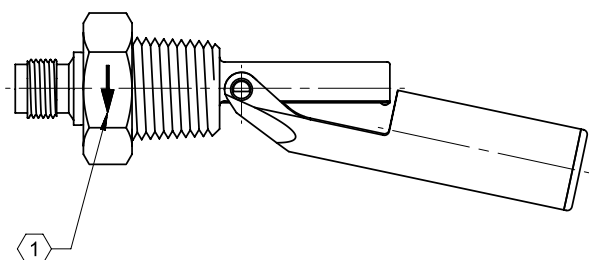
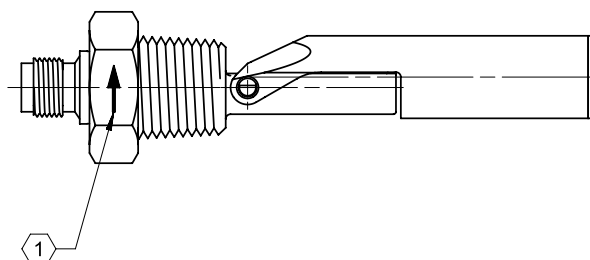
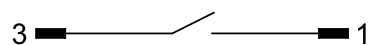


IMAGE 9/12



207KS14N05



207KS14N05

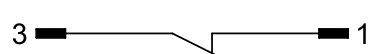
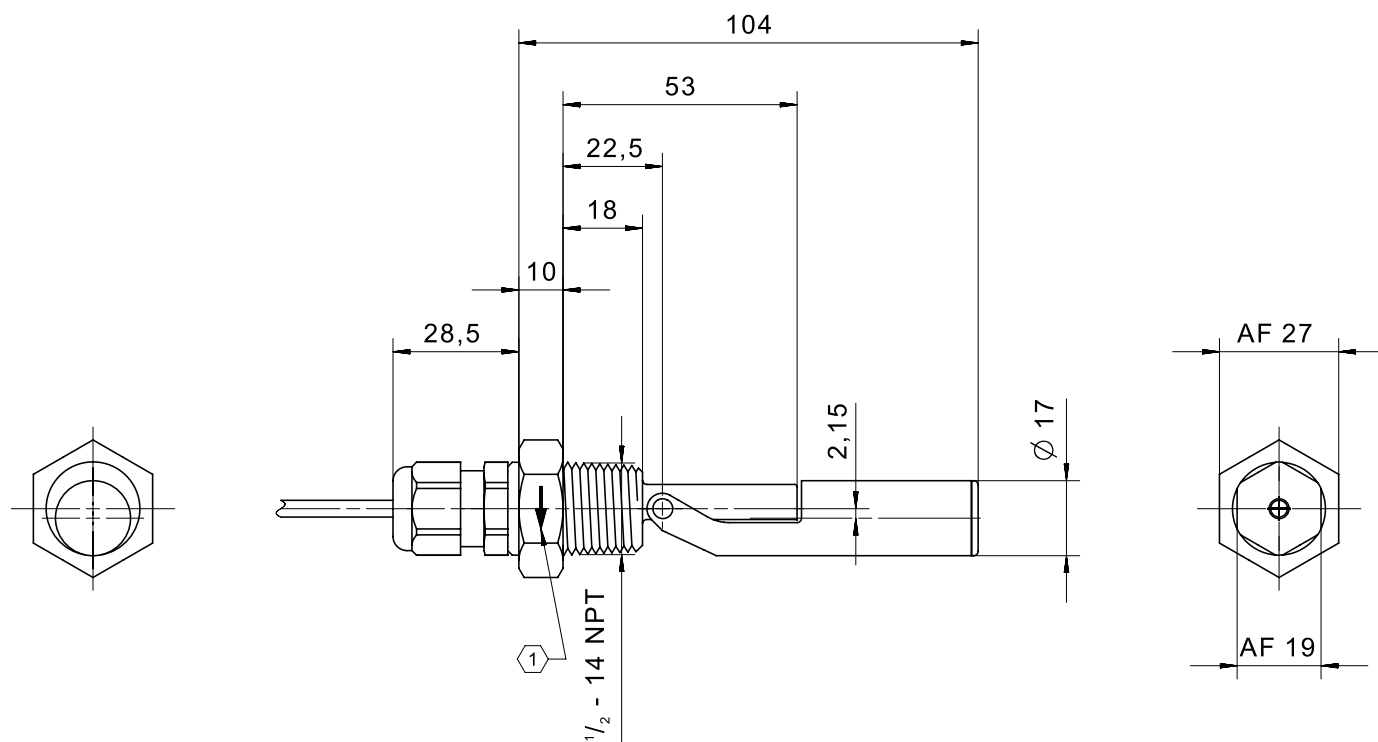


IMAGE 10/12

207KS..M..



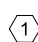
 marking for mounting position

IMAGE 11/12

cable gland PA

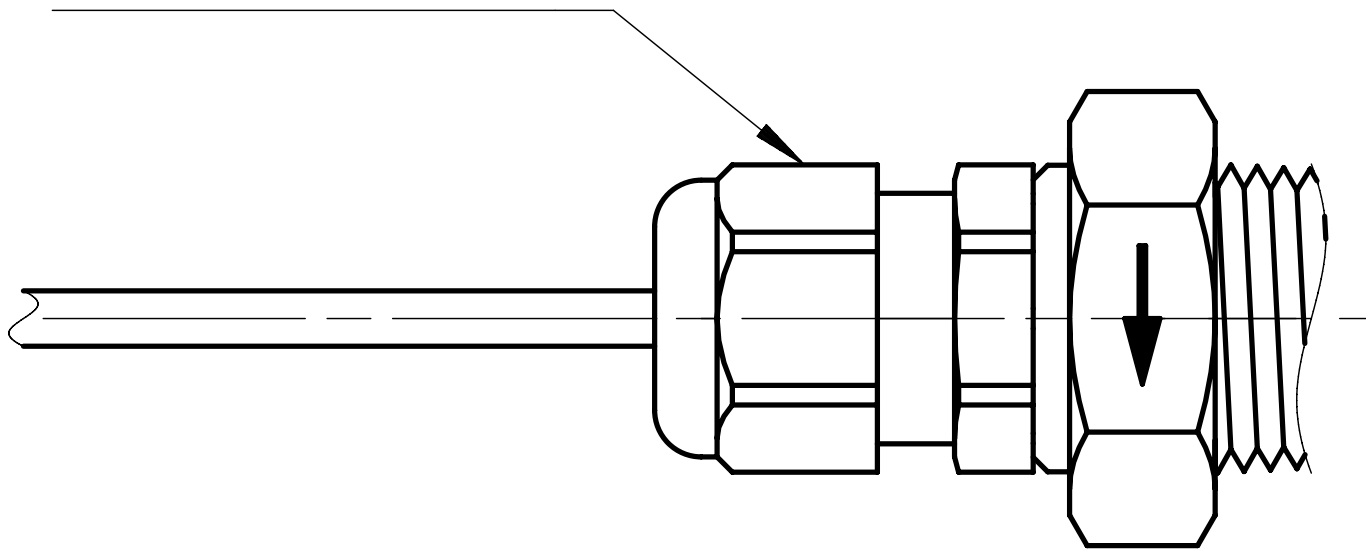


IMAGE 12/12



207KS0.M..
207KS1.M..

BN ———— WH

207KS2.M..

BN ———— GN
 WH



207KS0.M..
207KS1.M..

BN ———— WH

207KS2.M..

BN ———— GN
 WH

Product options

IMAGE 1/1

ORDERING KEY

207KS					Float switch side mount, mechanical hinge
					Contact form
	1				N.O./N.C. max. 250V
	2				C.O. max. 48V
					Housing material
		2			PP
		4			PA12
					Connections
			D		Connection thread M16x2, cable connection 1m, compression grommet
			M		Connection thread NPT 1/2, cable connection 1m, IP68
			N		Connection thread NPT 1/2, cable connection 1m
					Other cable lengths*
				-3	Cable length 3m
				-5	Cable length 5m
				-10	Cable length 10m
Variant:					
207KS14N05					Connection thread NPT 1/2, M12 connector, material PA12, N.O./N.C.
207KS24N02					Connection thread NPT 1/2, M12 connector, material PA12, C.O.

Optional

More materials for housings, compression grommets, cable sheathing on request

Características do artigo

Attribute	207KS12D	207KS12N	207KS14D	207KS14N	207KS14N05	207KS22D ▶
Max. switching voltage	250 V DC					48 V DC
Max. switching voltage	250 V AC					48 V AC
Max. switching current	1 A					0.25 A
Max. switching power	50 W					3 W
Contact form	1A or 1B					1C
Output signal	digital					
Technology	Reed					
Float diameter	17 mm					
Version	Mechanical hinge					
Housing material	PP		PA12			PP
Float material	PP		PA12			PP
Cable material	PVC				-	PVC
Operating temperature min.	-25 °C					
Max. operating temperature	105 °C					
Pressure resistance	3 bar					
Protection class outside container	IP67 DIN EN 60529					
Protection class inside container	IP68 DIN EN 60529					
Mounting type	Compression grommet	Thread	Compression grommet	Thread		Compression grommet
Thread	-	G 1/2 - 14NPT	-	G 1/2 - 14NPT		-
Installation opening	D22-23	G 1/2 - 14NPT	D22-23	G 1/2 - 14NPT		D22-23
Connector type	-				M12	-
Cable length	1 m				-	1 m

Características do artigo

Attribute	207KS22N	207KS24D	207KS24N
Max. switching voltage	48 V DC		
Max. switching voltage	48 V AC		
Max. switching current	0.25 A		
Max. switching power	3 W		
Contact form	1C		
Output signal	digital		
Technology	Reed		
Float diameter	17 mm		
Version	Mechanical hinge		
Housing material	PP	PA12	
Float material	PP	PA12	
Cable material	PVC		
Operating temperature min.	-25 °C		
Max. operating temperature	105 °C		
Pressure resistance	3 bar		
Protection class outside container	IP67 DIN EN 60529		
Protection class inside container	IP68 DIN EN 60529		
Mounting type	Thread	Compression grommet	Thread
Thread	G 1/2 - 14NPT	-	G 1/2 - 14NPT
Installation opening	G 1/2 - 14NPT	D22-23	G 1/2 - 14NPT
Connector type	-		
Cable length	1 m		