



Boia de nível magnética 204KS

Devido à seu design compacto e medição confiável, a boia de nível elobau modelo 204KS com junta mecânica de fixação é ideal para aplicação em equipamentos móbil e controle de processos industriais. A boias de nível elobau podem ser personalizadas de acordo com a sua necessidade através de forma simples e rápida em nosso configurador de produto on-line.

Especificação Técnica

- Design compacto
- O sistema de dobradiça mecânica permite trabalhar em aplicações com elevado fluxo de líquidos
- Material: PP ou PA12
- Opções de montagem: rosca G 1/2 ou borracha compressível
- Disponível com conector M12 ou saída à cabo
- Tipo de contato: NA, NF ou changeover
- Temperatura de trabalho de -25 °C até +105 °C
- Tensão máx. 250V
- Classe de proteção IP67

Desenho técnico

IMAGE 1/12

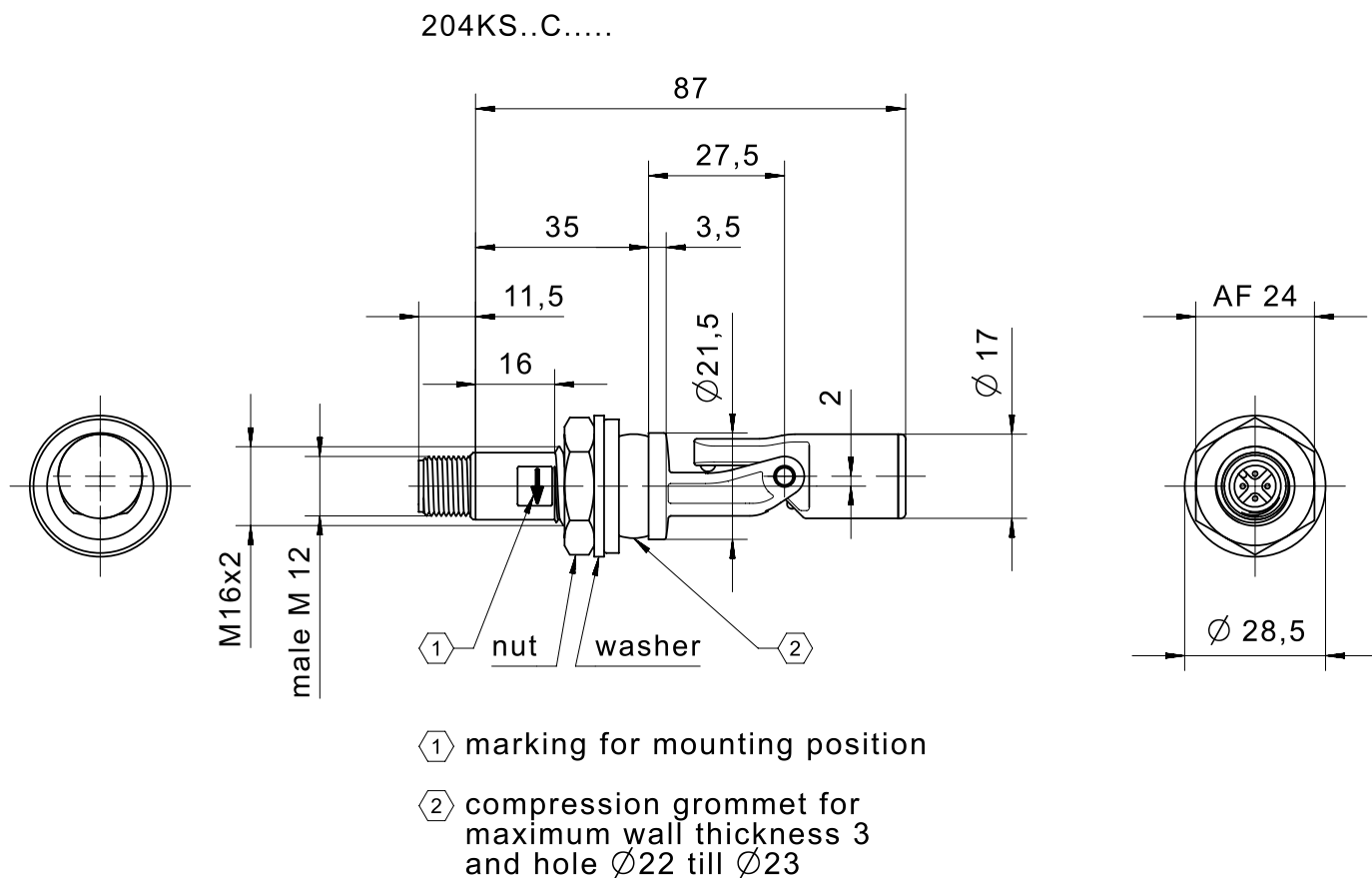


IMAGE 2/12

male M12

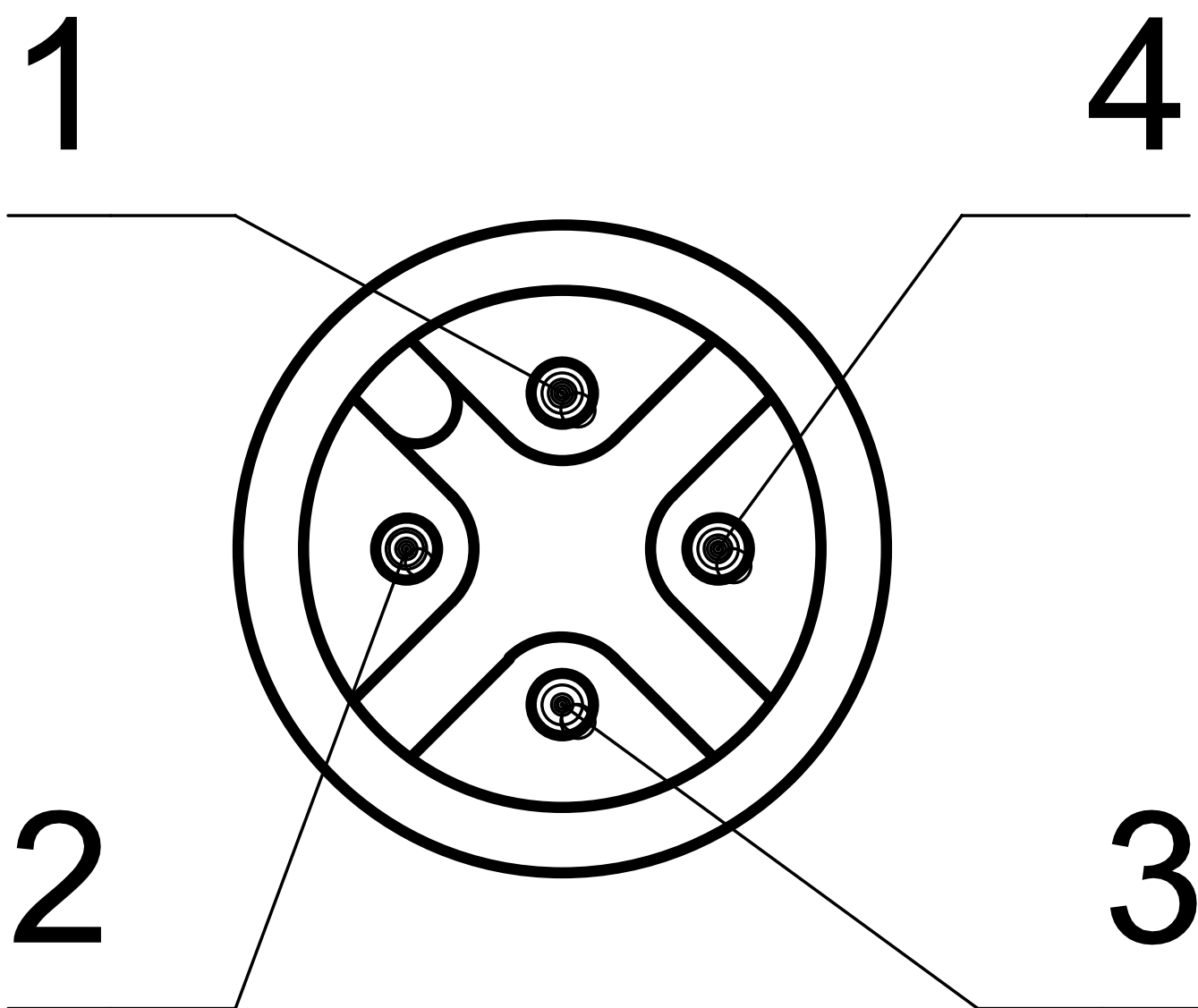
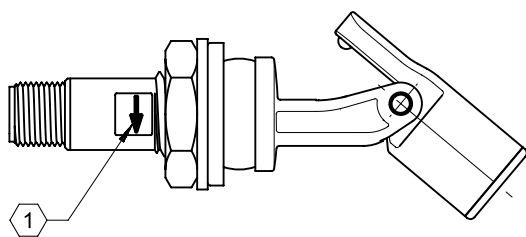


IMAGE 3/12

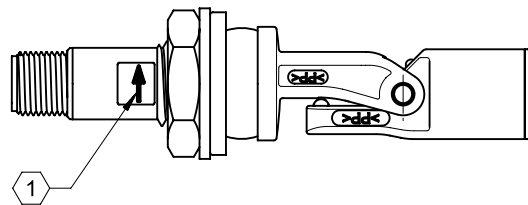


204KS0.C.....
204KS1.C.....

3 ——— 1

204KS2.C.....

3 ——— 4
3 ——— 1



204KS0.C.....
204KS1.C.....

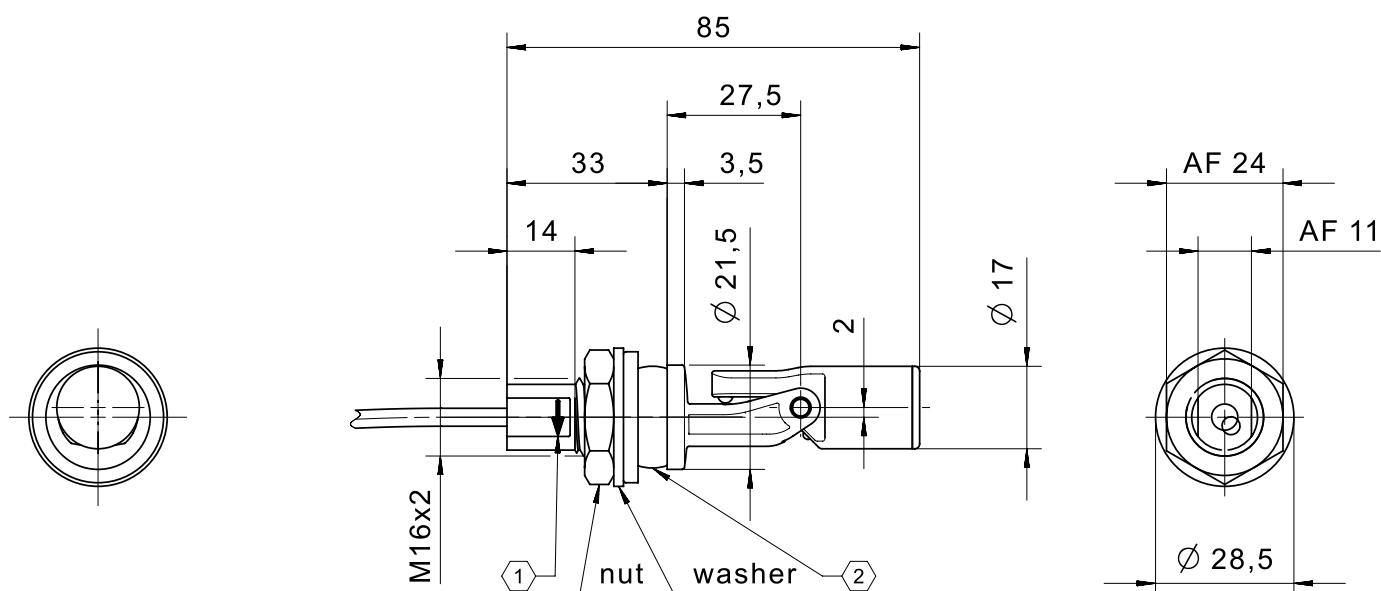
3 ——— 1

204KS2.C.....

3 ——— 4
3 ——— 1

IMAGE 4/12

204KS..D.....



① marking for mounting position

② compression grommet for
maximum wall thickness 3
and hole Ø22 till Ø23

IMAGE 5/12

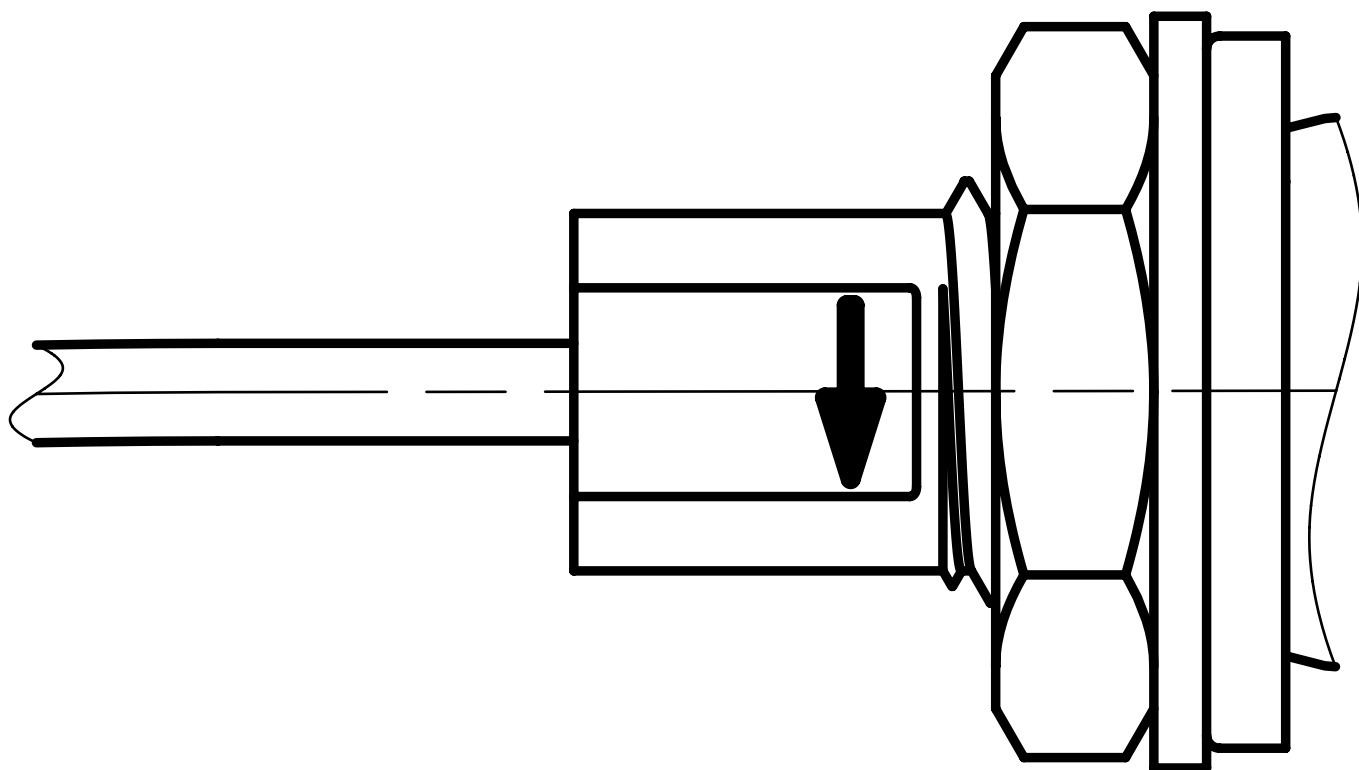
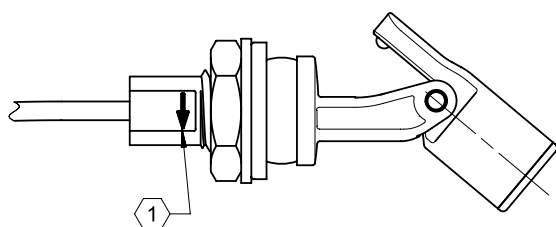


IMAGE 6/12

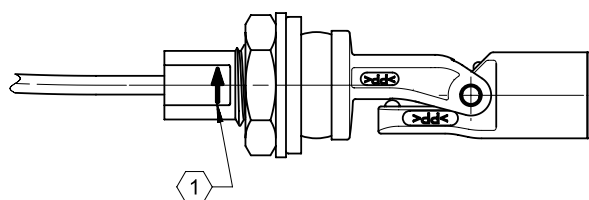


204KS0.D.....
204KS1.D.....

BN ———— WH

204KS2.D.....

BN ———— GN
 WH



204KS0.D.....
204KS1.D.....

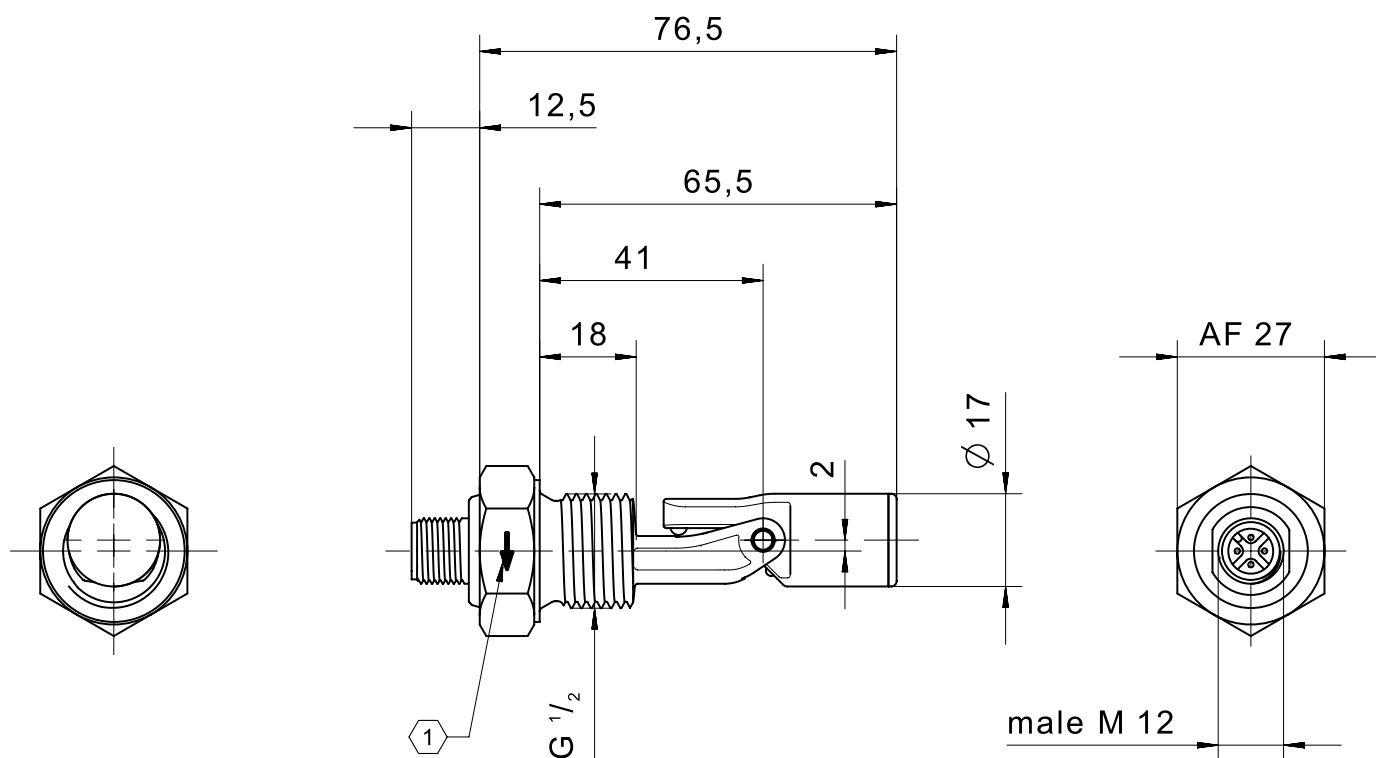
BN ———— WH

204KS2.D.....

BN ———— GN
 WH

IMAGE 7/12

204KS..E.....




 marking for mounting position

IMAGE 8/12

male M12

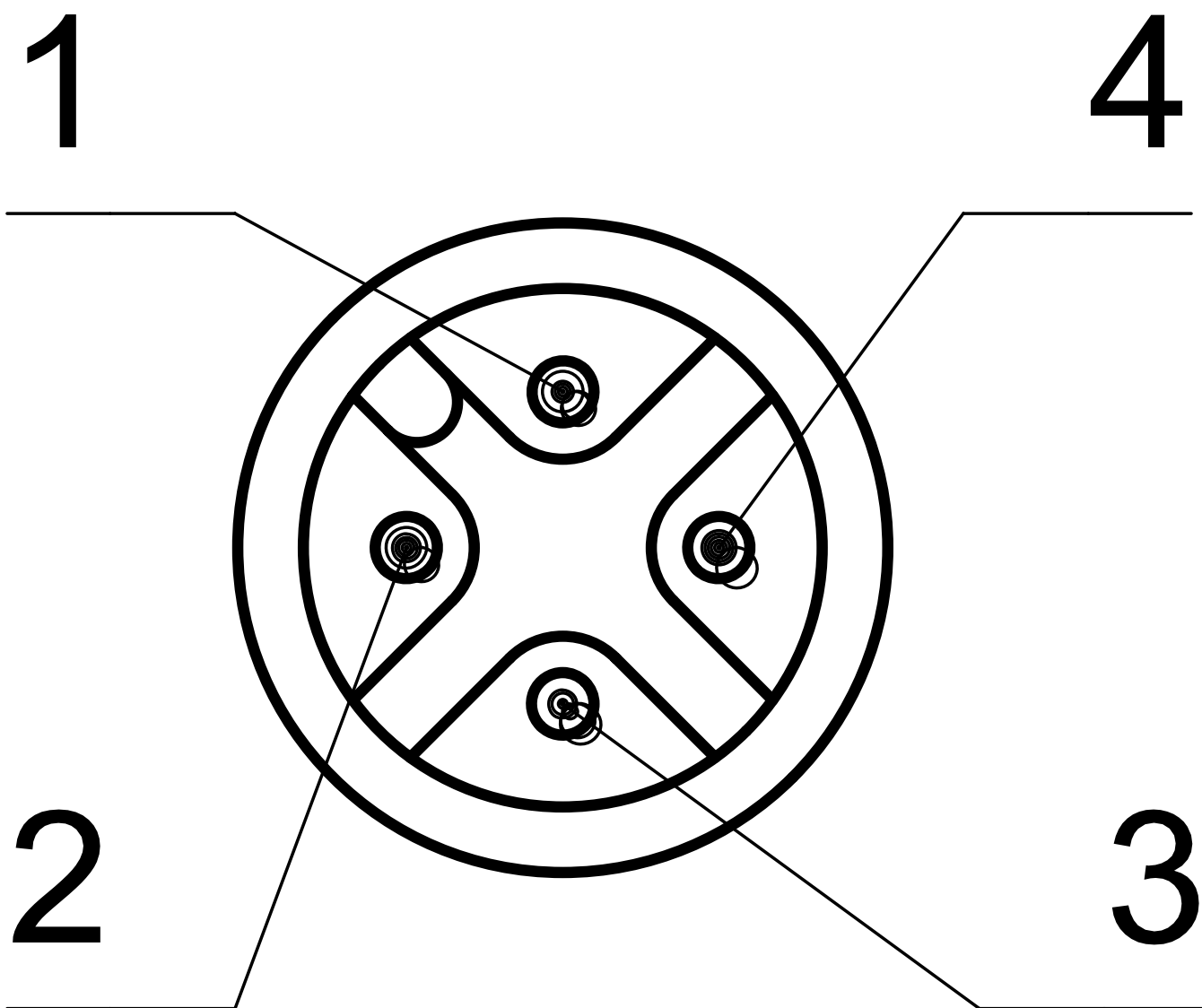
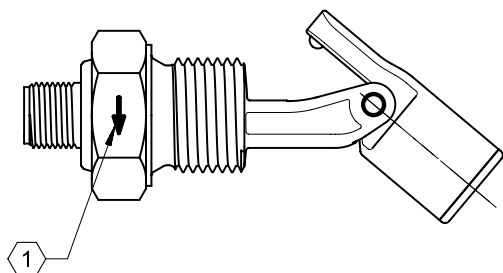
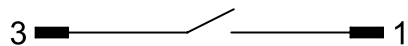


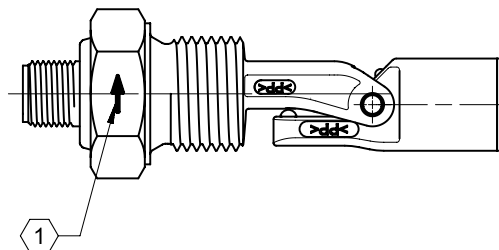
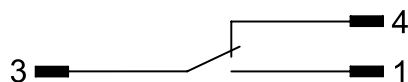
IMAGE 9/12



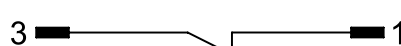
204KS0.E.....
204KS1.E.....



204KS2.E.....



204KS0.E.....
204KS1.E.....



204KS2.E.....

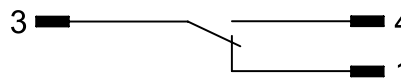
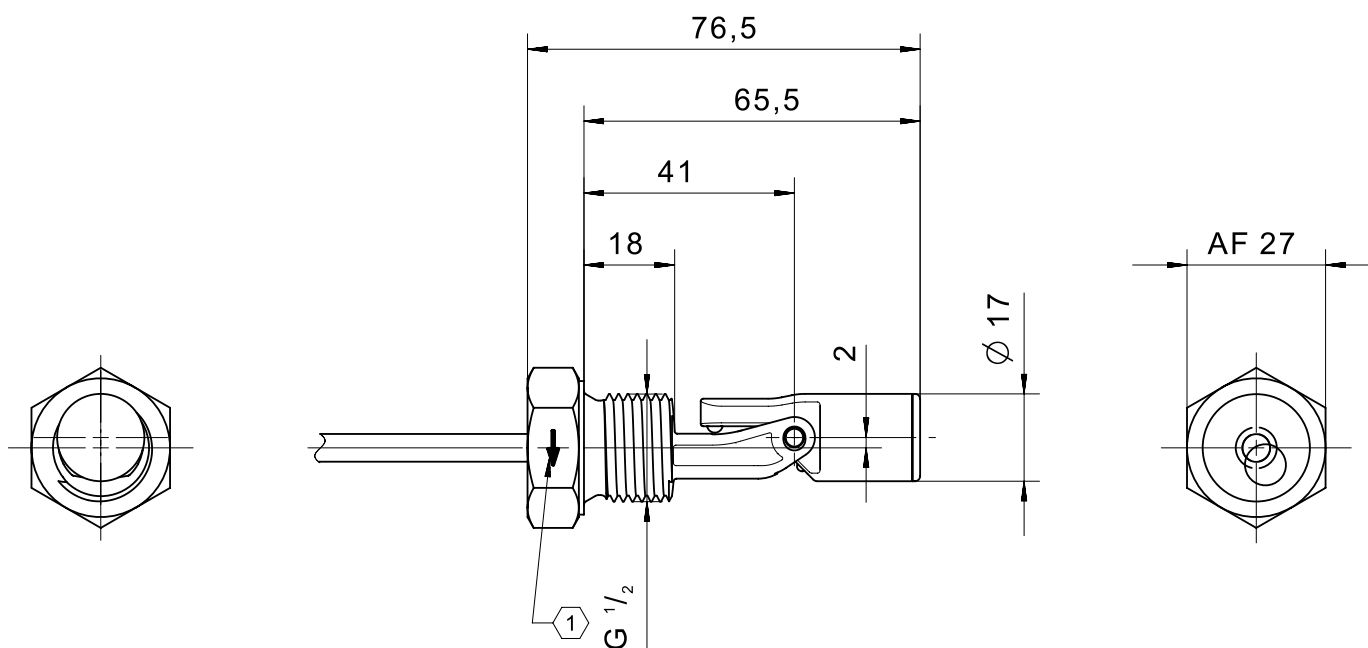
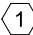
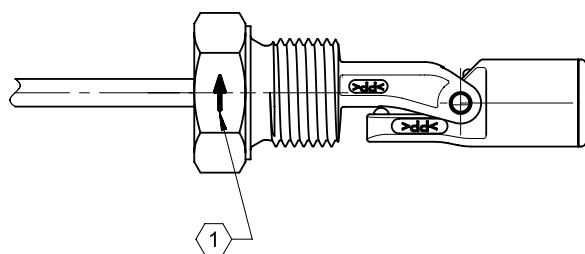


IMAGE 10/12

204KS..G.....



 marking for mounting position



Product options

IMAGE 1/1

ORDERING KEY

| 204KS | | | | | | | Float switch side mount, short, mechanical hinge | |
|-------|---|---|---|---|----|-----|---|--------------------------------|
| | | | | | | | Contact form | |
| | 1 | | | | | | N.O. / N.C. max. 250 V | |
| | 2 | | | | | | C.O. max. 48V | |
| | | | | | | | | |
| | | | | | | | Housing material | |
| | | 2 | | | | | PP | |
| | | 4 | | | | | PA12 | |
| | | | | | | | | |
| | | | | | | | Connections | |
| | | | C | | | | Connection thread M16x2, M12 connector, compression grommet | |
| | | | D | | | | Connection thread M16x2, cable connection 1m, compression grommet | |
| | | | E | | | | Connection thread G1/2, M12 connector | |
| | | | G | | | | Connection thread G1/2, cable connection 1m | |
| | | | | | | | | |
| | | | | | | | Material of compression grommet | |
| | | | | 0 | | | No seal* | * Only for connections E and G |
| | | | | T | | | TPE (Santoprene) | |
| | | | | | | | | |
| | | | | | | | Material of cable sheath | |
| | | | | | 1H | | PVC, cable length 1m* | * Only for connections D and G |
| | | | | | 00 | | Only if selected with M12 connector* | * Only for connections C and E |
| | | | | | | | | |
| | | | | | | | Other cable lengths* | * Only for connections D and G |
| | | | | | | -3 | Cable length 3m | |
| | | | | | | -5 | Cable length 5m | |
| | | | | | | -10 | Cable length 10m | |

Optional

More materials for housings, compression grommets, cable sheathing on request

Características do artigo

| Attribute | 204KS12CT00 | 204KS12DT1H | 204KS12E000 | 204KS12G01H | 204KS14CT00 | 204KS14DT1H ▶ |
|------------------------------------|---------------------------------|-------------|-------------|-------------|---------------------|---------------|
| Max. switching voltage | 250 V DC | | | | | |
| Max. switching voltage | 250 V AC | | | | | |
| Max. switching current | 1 A | | | | | |
| Max. switching power | 50 W | | | | | |
| Contact form | 1A or 1B | | | | | |
| Output signal | digital | | | | | |
| Technology | Reed | | | | | |
| Float diameter | 17 mm | | | | | |
| Version | Mechanical hinge, small version | | | | | |
| Housing material | PP | | | | PA12 | |
| Float material | PP | | | | PA12 | |
| Cable material | - | PVC | - | PVC | - | PVC |
| Operating temperature min. | -25 °C | | | | | |
| Max. operating temperature | 105 °C | | | | | |
| Pressure resistance | 3 bar | | | | | |
| Protection class outside container | IP67 DIN EN 60529 | | | | | |
| Protection class inside container | IP68 DIN EN 60529 | | | | | |
| Mounting type | Compression grommet | | Thread | | Compression grommet | |
| Thread | - | | G 1/2 | | - | |
| Installation opening | D22-23 | | G1/2 | | D22-23 | |
| Connector type | M12 | - | M12 | - | M12 | - |
| Cable length | - | 1 m | - | 1 m | - | 1 m |

Características do artigo

| Attribute | 204KS14E000 | 204KS14G01H | 204KS22CT00 | 204KS22DT1H | 204KS22E000 | 204KS22G01H ▶ |
|------------------------------------|---------------------------------|-------------|---------------------|-------------|-------------|---------------|
| Max. switching voltage | 250 V DC | | 48 V DC | | | |
| Max. switching voltage | 250 V AC | | 48 V AC | | | |
| Max. switching current | 1 A | | 0.5 A | | | |
| Max. switching power | 50 W | | 10 W | | | |
| Contact form | 1A or 1B | | 1C | | | |
| Output signal | digital | | | | | |
| Technology | Reed | | | | | |
| Float diameter | 17 mm | | | | | |
| Version | Mechanical hinge, small version | | | | | |
| Housing material | PA12 | | PP | | | |
| Float material | PA12 | | PP | | | |
| Cable material | - | PVC | - | PVC | - | PVC |
| Operating temperature min. | -25 °C | | | | | |
| Max. operating temperature | 105 °C | | | | | |
| Pressure resistance | 3 bar | | | | | |
| Protection class outside container | IP67 DIN EN 60529 | | | | | |
| Protection class inside container | IP68 DIN EN 60529 | | | | | |
| Mounting type | Thread | | Compression grommet | | Thread | |
| Thread | G 1/2 | | - | | G 1/2 | |
| Installation opening | G1/2 | | D22-23 | | G1/2 | |
| Connector type | M12 | - | M12 | - | M12 | - |
| Cable length | - | 1 m | - | 1 m | - | 1 m |

Características do artigo

| Attribute | 204KS24CT00 | 204KS24DT1H | 204KS24E000 | 204KS24G01H |
|------------------------------------|---------------------------------|-------------|-------------|-------------|
| Max. switching voltage | 48 V DC | | | |
| Max. switching voltage | 48 V AC | | | |
| Max. switching current | 0.5 A | | | |
| Max. switching power | 10 W | | | |
| Contact form | 1C | | | |
| Output signal | digital | | | |
| Technology | Reed | | | |
| Float diameter | 17 mm | | | |
| Version | Mechanical hinge, small version | | | |
| Housing material | PA12 | | | |
| Float material | PA12 | | | |
| Cable material | - | PVC | - | PVC |
| Operating temperature min. | -25 °C | | | |
| Max. operating temperature | 105 °C | | | |
| Pressure resistance | 3 bar | | | |
| Protection class outside container | IP67 DIN EN 60529 | | | |
| Protection class inside container | IP68 DIN EN 60529 | | | |
| Mounting type | Compression grommet | | Thread | |
| Thread | - | | G 1/2 | |
| Installation opening | D22-23 | | G1/2 | |
| Connector type | M12 | - | M12 | - |
| Cable length | - | 1 m | - | 1 m |