



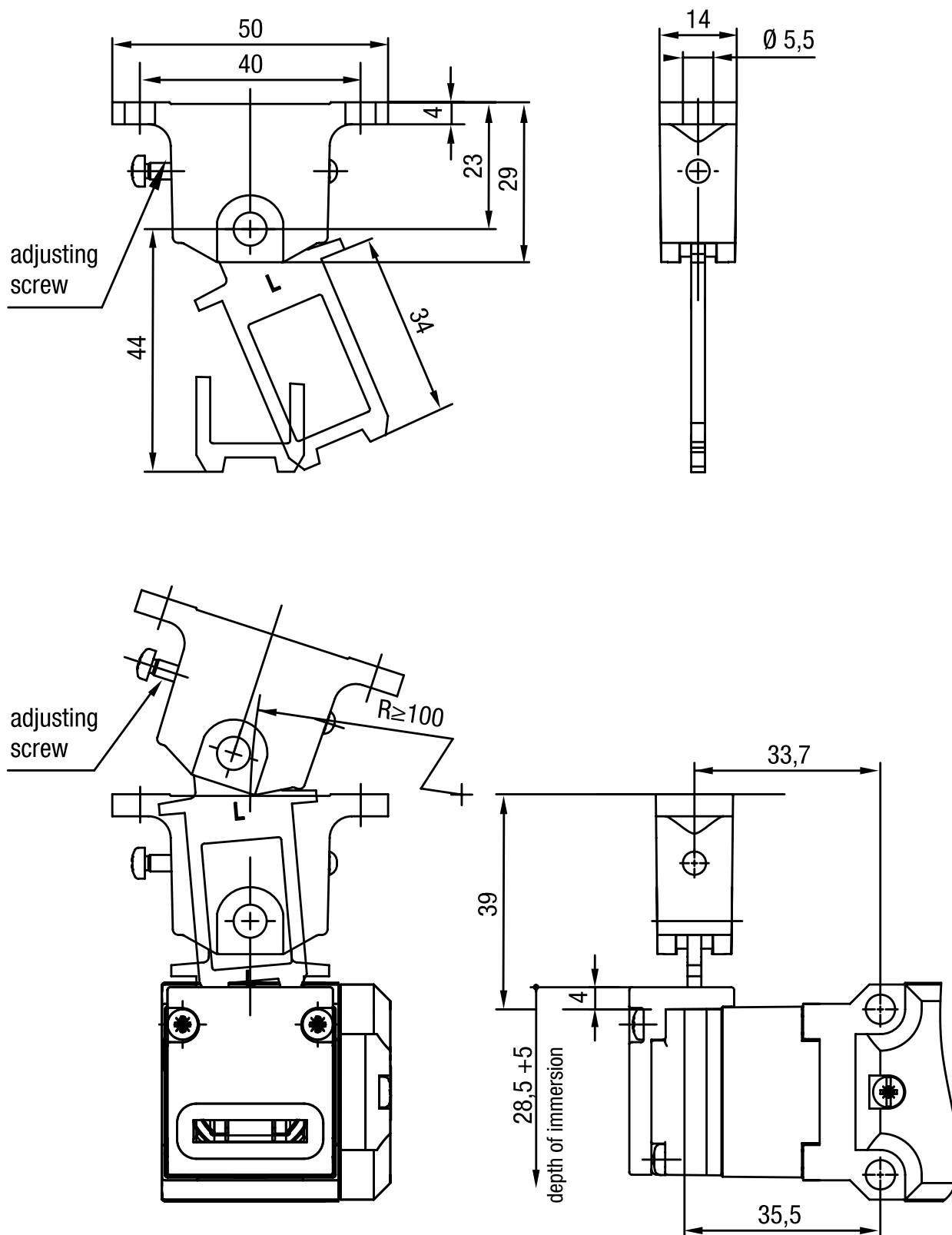
## Atuador ZBL5ME

### Especificação Técnica

- Overrun 5 mm
- Raio  $\geq 200$ ,  $\leq 1000$
- Material: aço inox 1.4301, alumínio fundido

Desenho técnico

IMAGE 1/1



#### Características do artigo

Attribute	ZBL5ME
Installation	arbitrary
Dimensions	50 x 67 x 14 mm (H/B/T)
Door radius min.	100 mm
Overrun max.	5 mm
Usability of insertion funnel	yes
Housing material	Betaetiger/Schraube Stahl rostfrei
Mounting type	screwed