



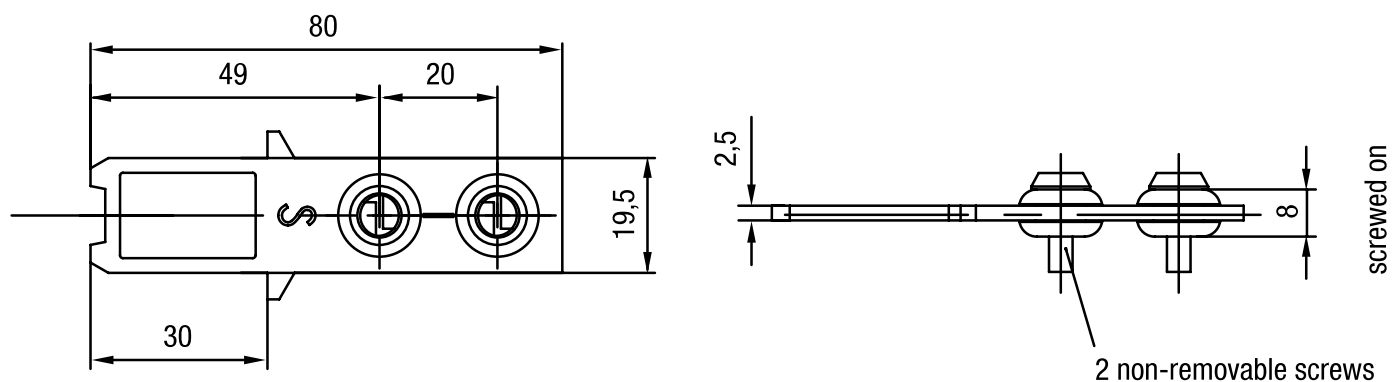
Atuador ZBG5G

Especificação Técnica

- Overrun 5 mm
- Raio ≥ 300
- Material: aço inox 1.4301, CR

Desenho técnico

IMAGE 1/1



Características do artigo

| Attribute | ZBG5G |
|-------------------------------|--|
| Dimensions | 29 x 80 x 8 mm (H/B/T) |
| Tensile force max. | 3000 N |
| Door radius min. | 300 mm |
| Overrun max. | 5 mm |
| Usability of insertion funnel | no |
| Housing material | Betaetiger/Schraube Stahl rostfrei Gummituelle NBR |
| Mounting type | screwed |
| Installation | arbitrary |