



## Supports 35000

Les détecteurs de sécurité et les aimants associés ne doivent pas être fixés directement sur un matériau ferritique. C'est pourquoi nous recommandons ici l'utilisation de nos supports.

### Caractéristiques du produit

- Permet de monter des détecteurs de sécurité et des actionneurs directement sur un matériau ferritique

### Dessin technique

PHOTO 1/8

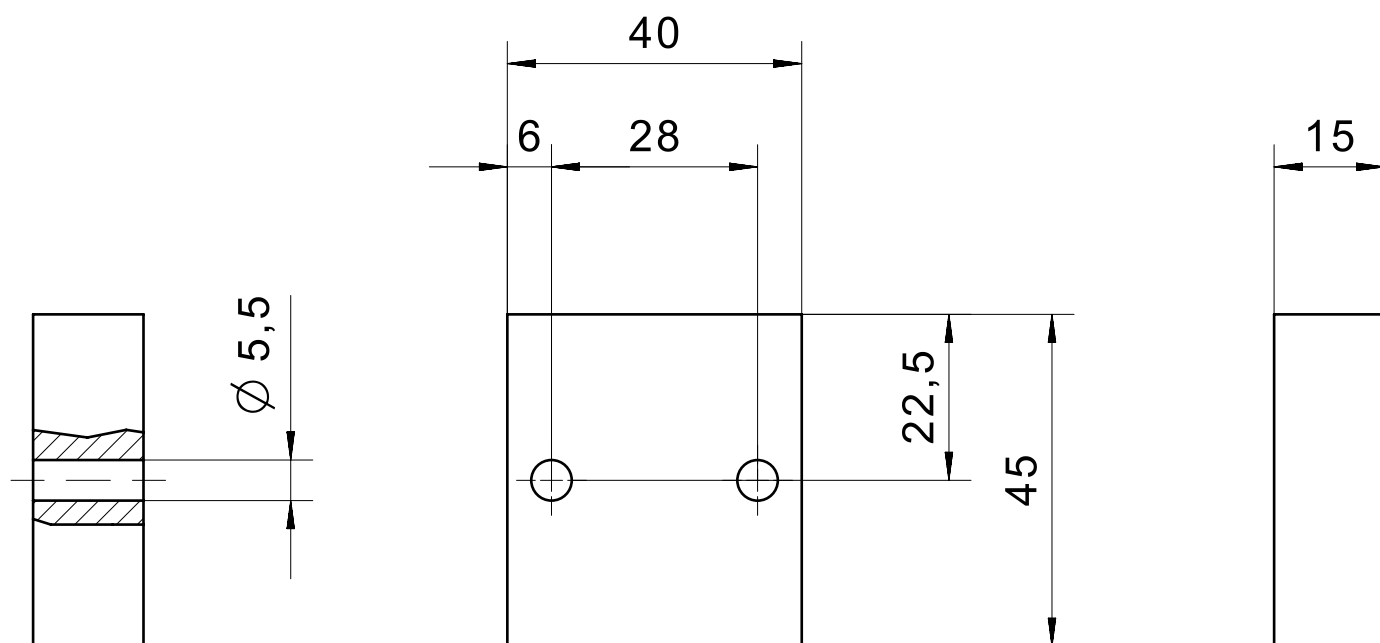


PHOTO 2/8

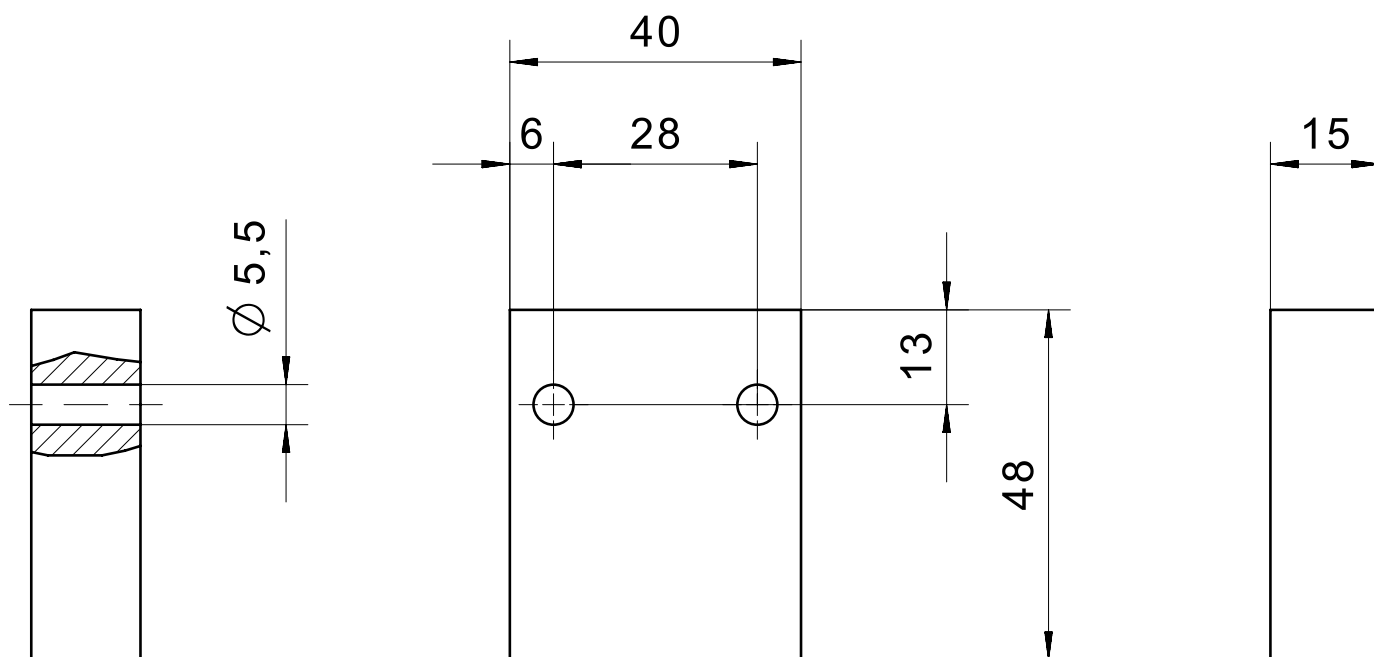


PHOTO 3/8

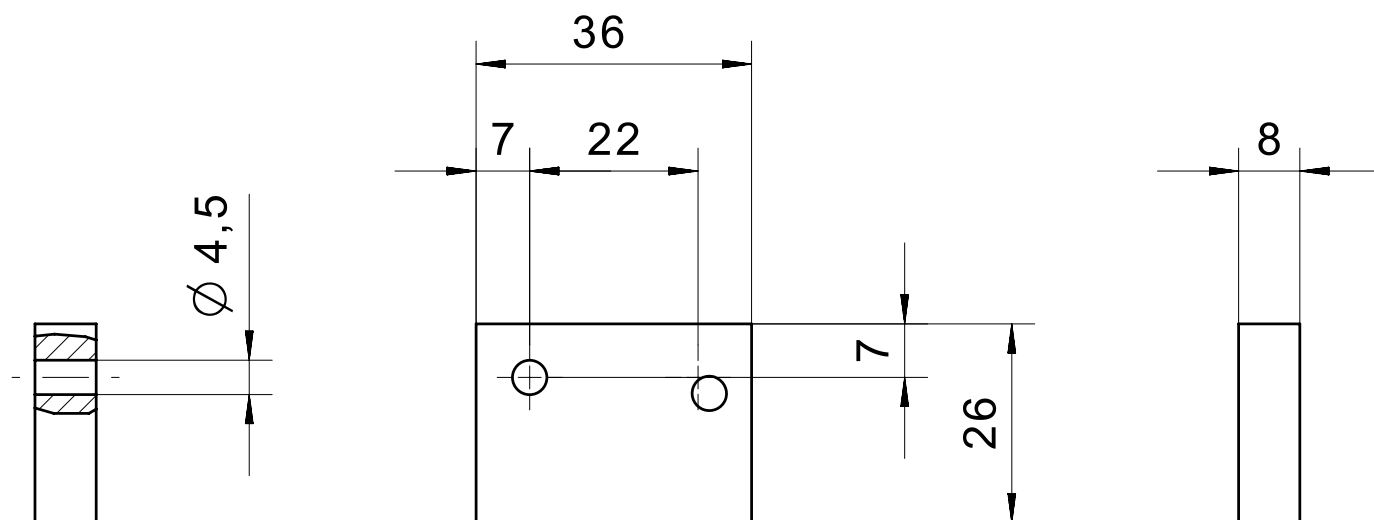


PHOTO 4/8

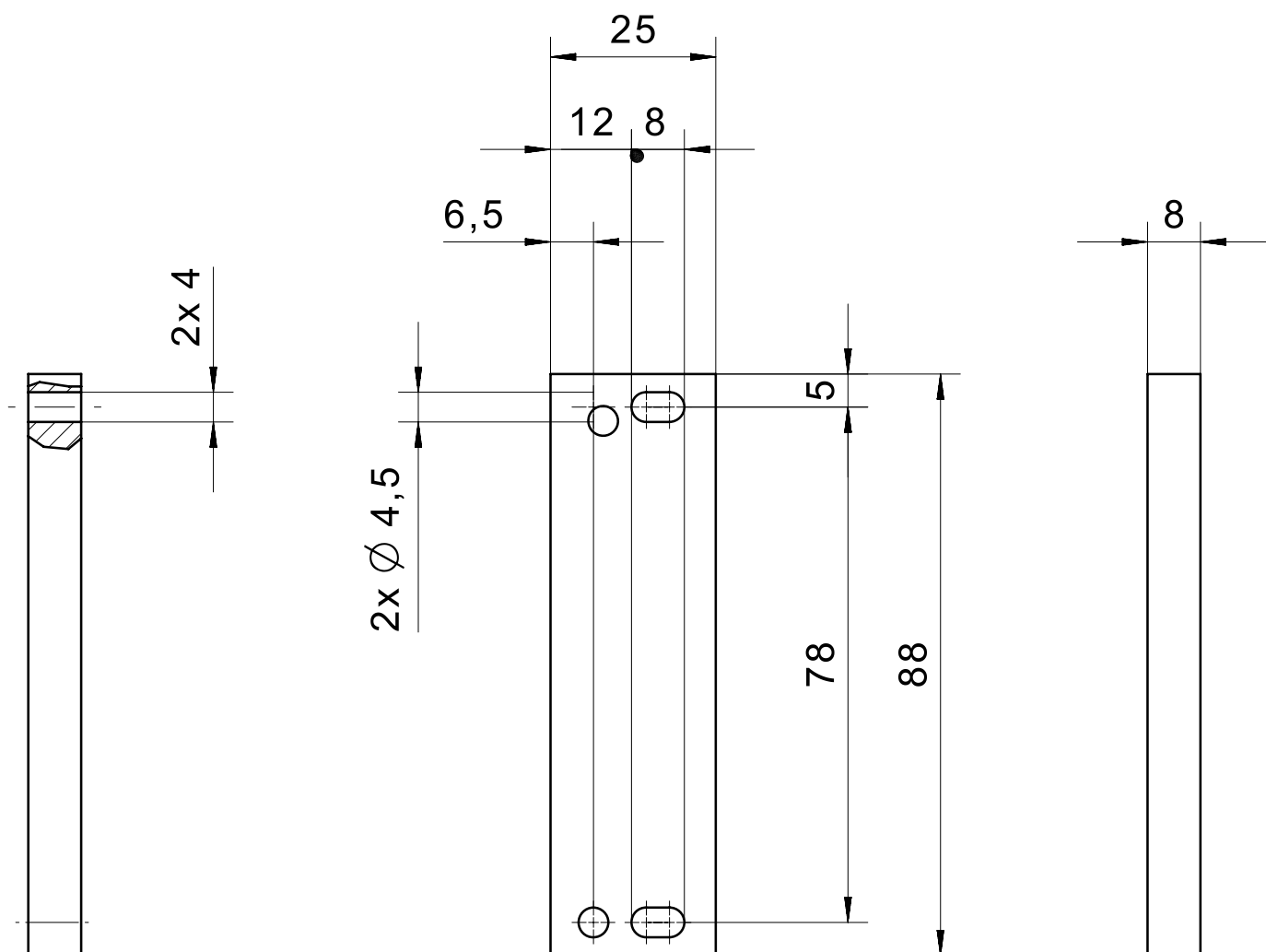


PHOTO 5/8

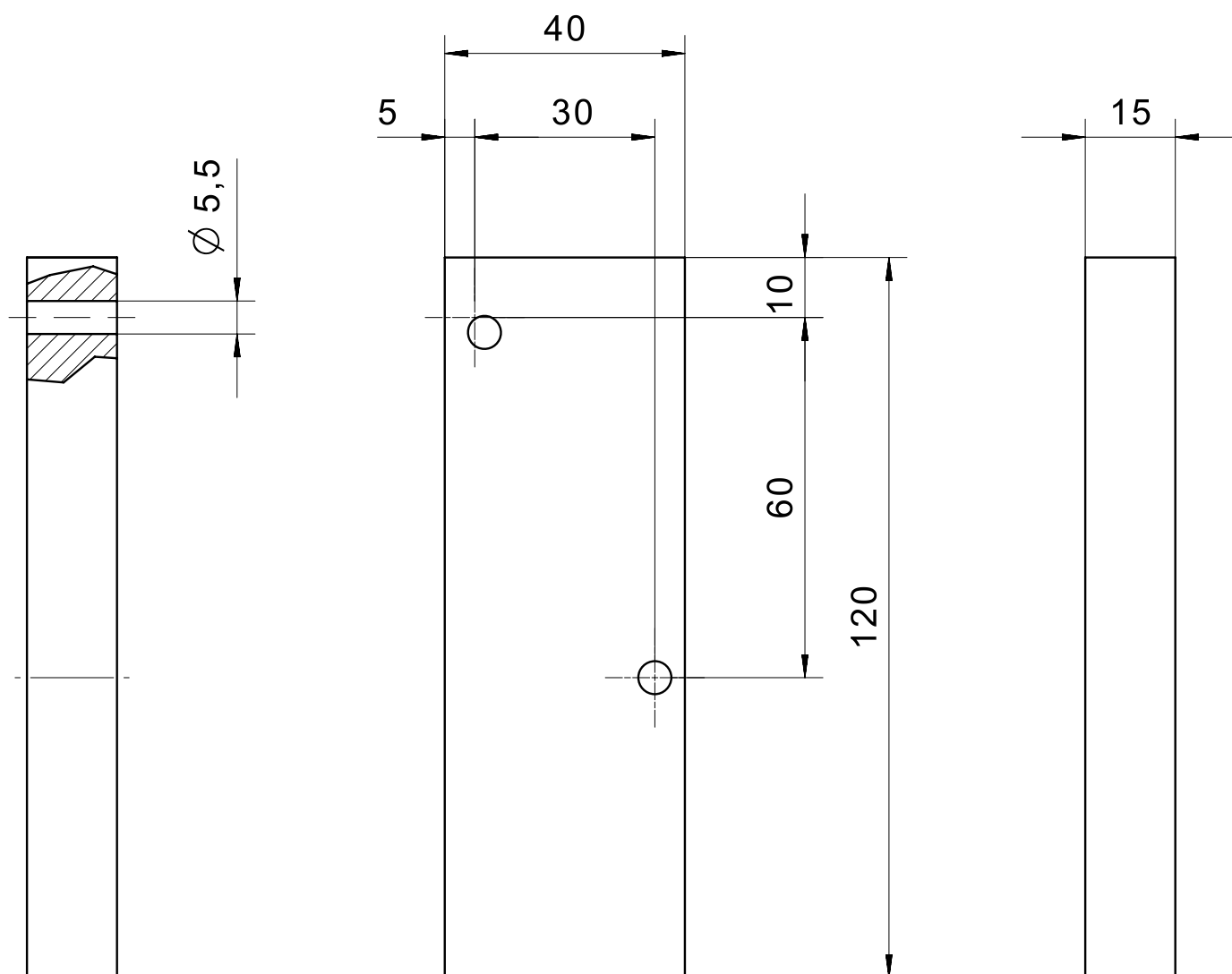


PHOTO 6/8

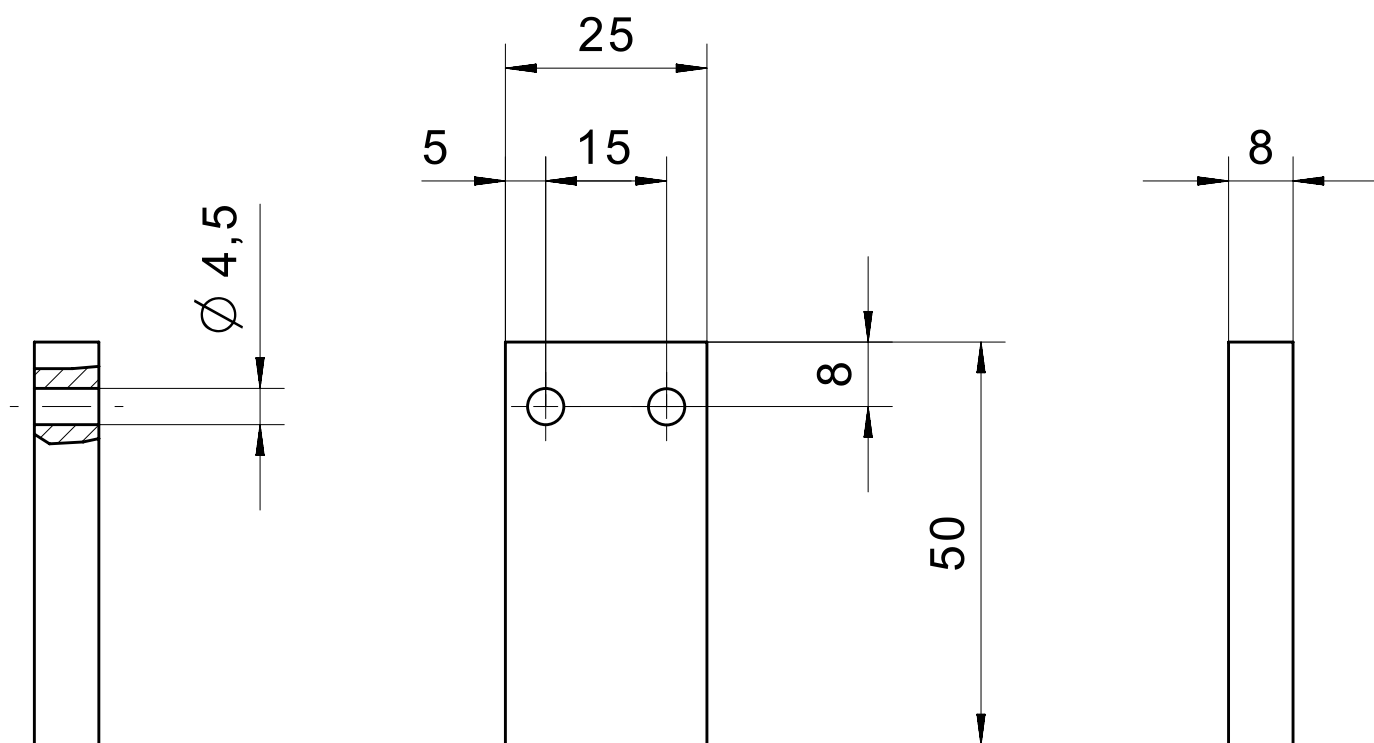


PHOTO 7/8

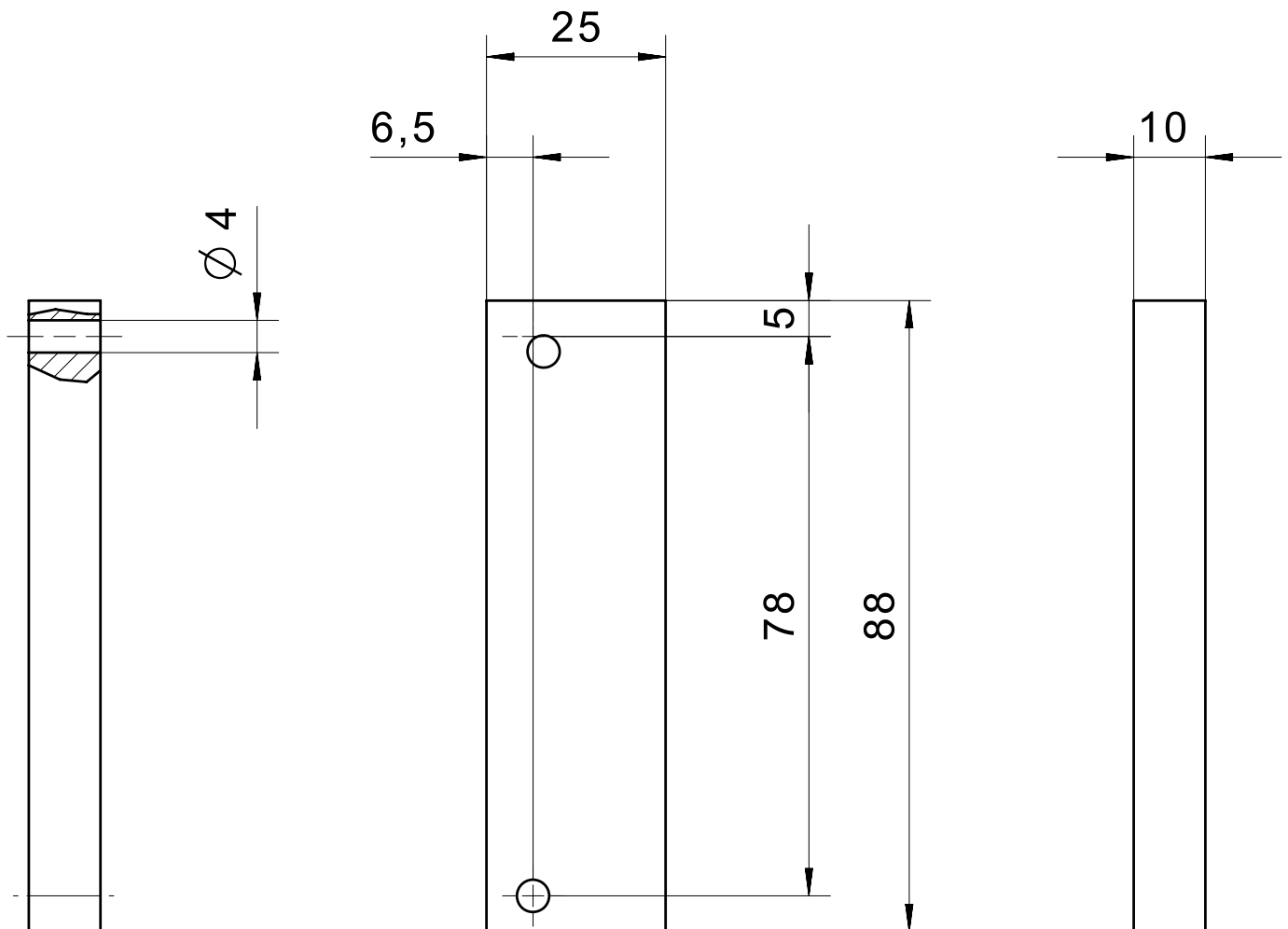
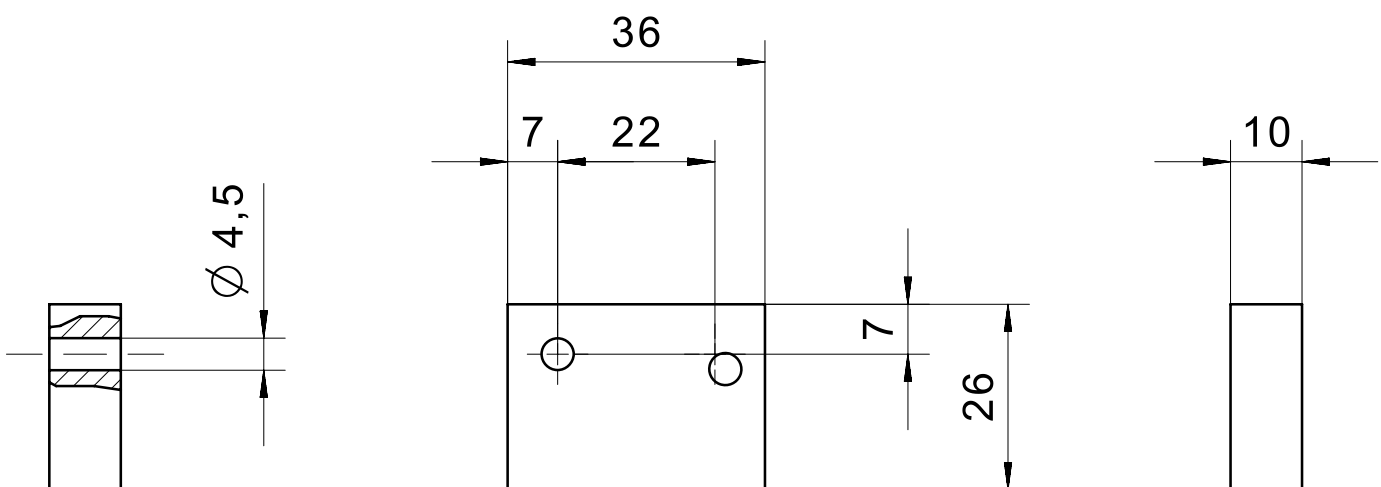


PHOTO 8/8



## Options de produit

PHOTO 1/1

### ORDERING KEY

350		Spacer plates
	002	For safety sensor 161...
	003	For actuator 30422112
	004	Material thickness 8 mm – for safety sensor 153... and corresponding actuators
	005	Material thickness 8 mm – for safety sensor 165... and corresponding actuators
	006	For safety sensor with built-in relay 117...
	007	For safety sensor 114... and corresponding actuators
	008	Material thickness 10 mm – for safety sensor 165... and corresponding actuators
	009	Material thickness 10 mm – for safety sensor 153... and corresponding actuators