



Bolt for safety guard locking ZS

Technical drawing

IMAGE 1/4: ZR0L FÜR LINKSANGESCHLAGENE TÜREN

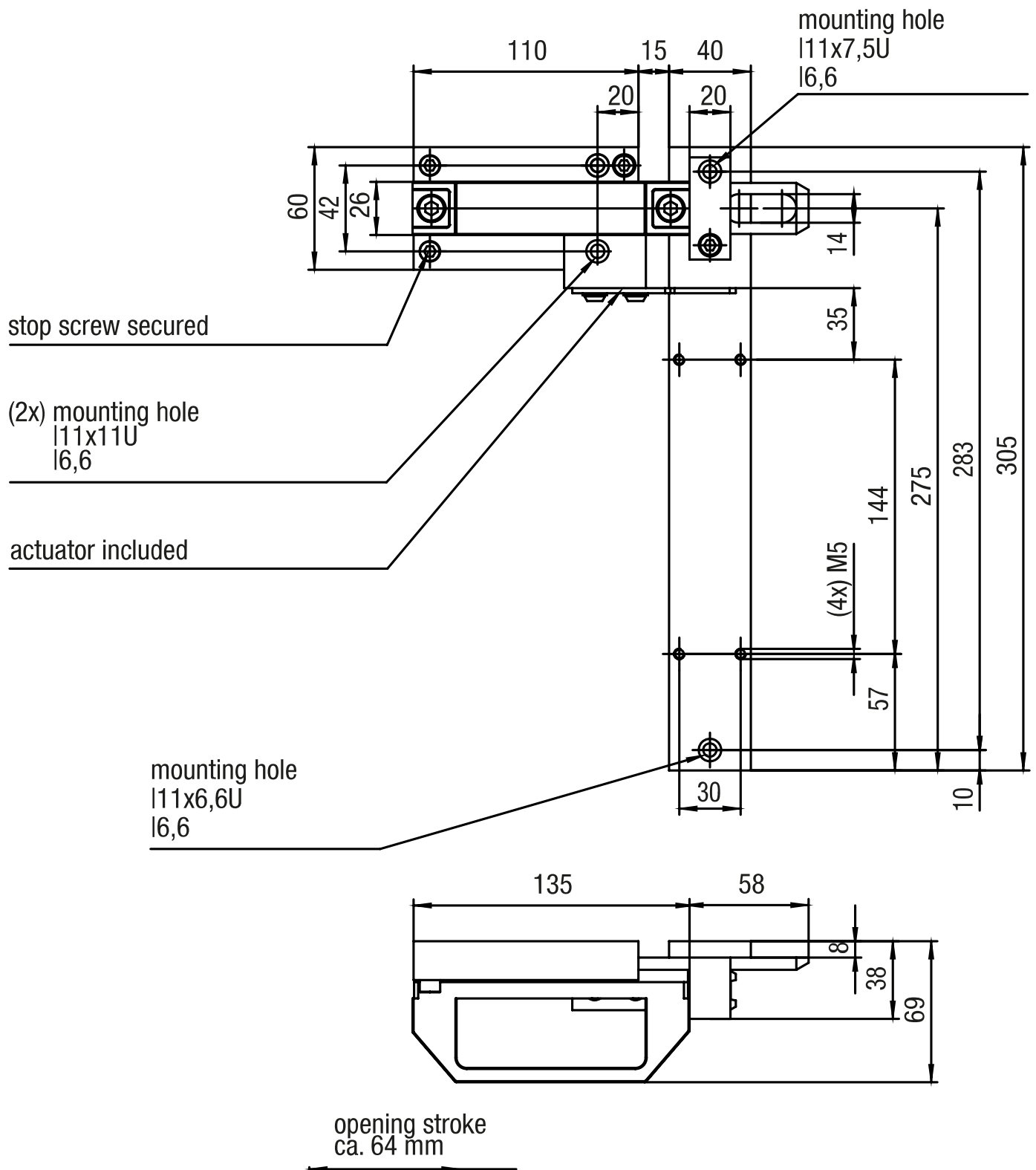
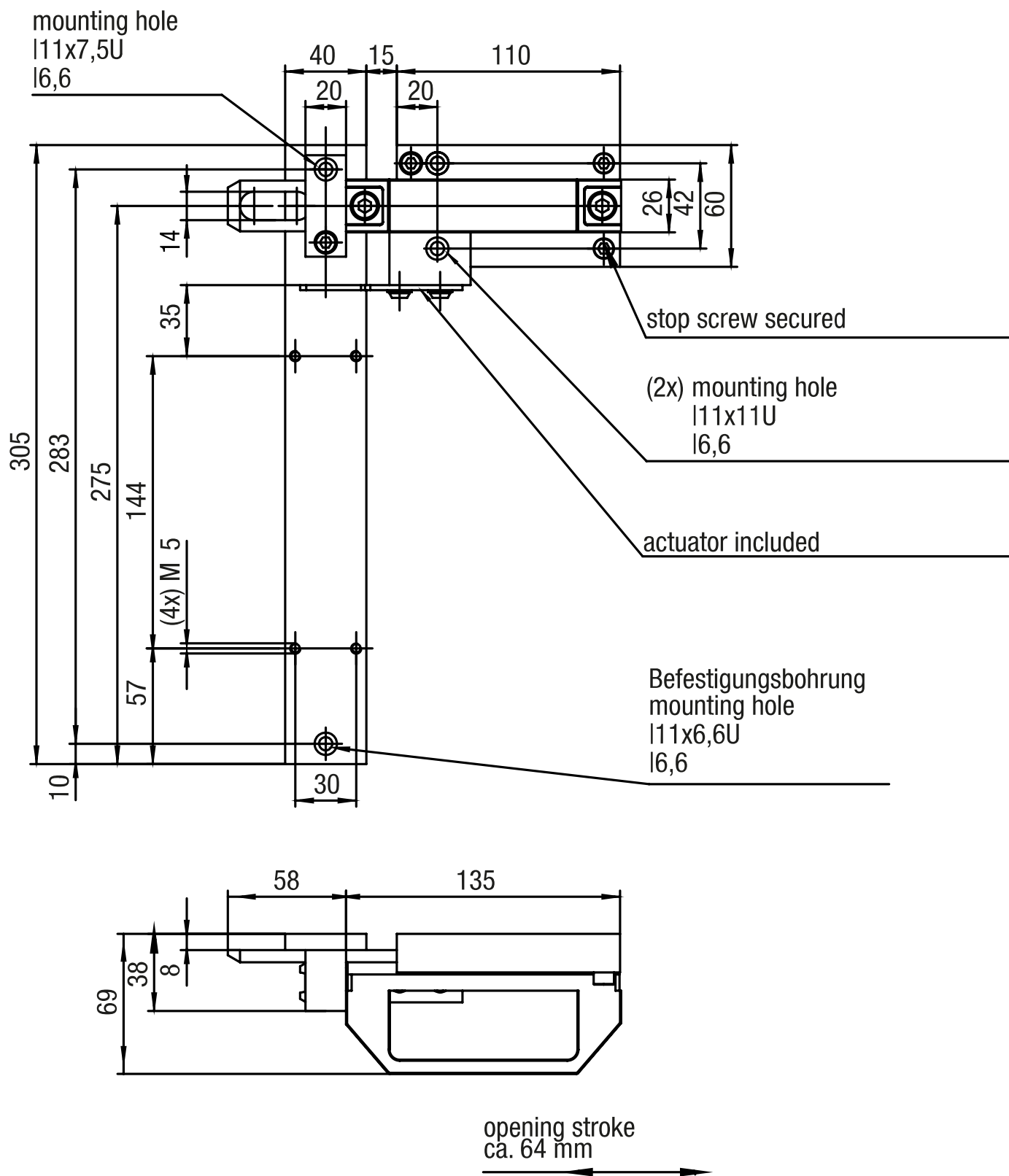


IMAGE 2/4: ZR0R FÜR RECHTSANGESCHLAGENE TÜREN



Technical drawing of the 11x6,6U actuator assembly, showing front and side views with dimensions and labels.

Front View Dimensions:

- Overall width: 110 mm
- Mounting hole spacing (center-to-center): 15 mm, 40 mm
- Mounting hole diameter: $\varnothing 14,4$
- Actuator body width: 20 mm
- Actuator body height: 14 mm
- Actuator body mounting hole diameter: $\varnothing 14,4$
- Actuator body mounting hole offset: 35 mm
- Actuator body mounting hole diameter: $\varnothing 14,4$
- Actuator body mounting hole offset: 144 mm
- Actuator body mounting hole diameter: $\varnothing 14,4$
- Actuator body mounting hole offset: 57 mm
- Actuator body mounting hole diameter: $\varnothing 14,4$
- Actuator body mounting hole offset: 10 mm
- Actuator body mounting hole diameter: $\varnothing 14,4$
- Actuator body mounting hole offset: 30 mm
- Actuator body mounting hole diameter: $\varnothing 14,4$
- Actuator body mounting hole offset: 133,5 mm
- Actuator body mounting hole diameter: $\varnothing 14,4$
- Actuator body mounting hole offset: 275 mm
- Actuator body mounting hole diameter: $\varnothing 14,4$
- Actuator body mounting hole offset: 283 mm
- Actuator body mounting hole diameter: $\varnothing 14,4$
- Actuator body mounting hole offset: 305 mm

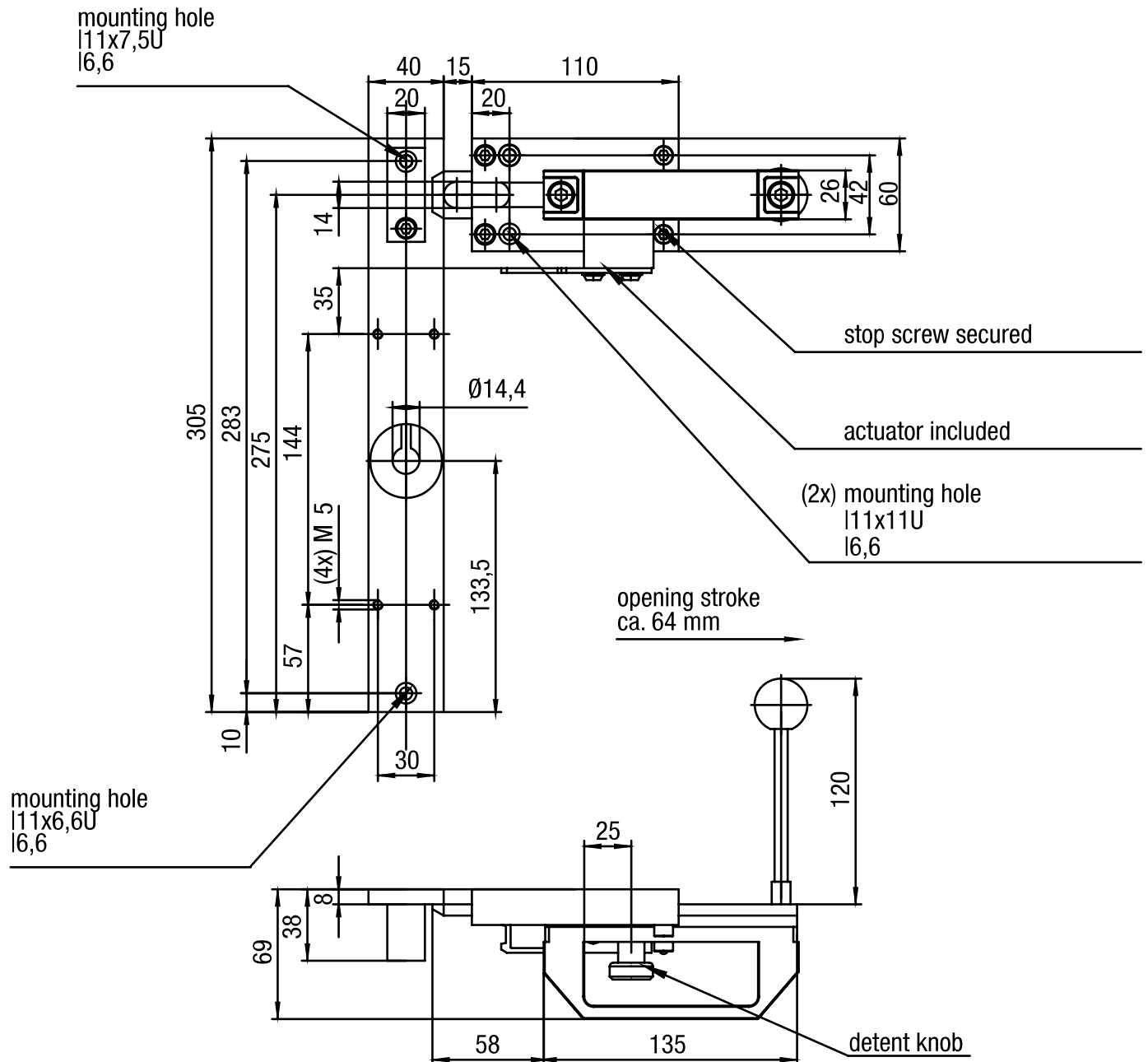
Side View Dimensions:

- Overall height: 120 mm
- Actuator body height: 25 mm
- Actuator body mounting hole diameter: $\varnothing 14,4$
- Actuator body mounting hole offset: 8 mm
- Actuator body mounting hole diameter: $\varnothing 14,4$
- Actuator body mounting hole offset: 38 mm
- Actuator body mounting hole diameter: $\varnothing 14,4$
- Actuator body mounting hole offset: 69 mm
- Actuator body mounting hole diameter: $\varnothing 14,4$
- Actuator body mounting hole offset: 135 mm
- Actuator body mounting hole diameter: $\varnothing 14,4$
- Actuator body mounting hole offset: 58 mm

Labels:

- stop screw secured
- (2x) mounting hole 11x11U l6,6
- actuator included
- opening stroke ca. 64 mm
- detent knob
- mounting hole 11x7,5U l6,6
- mounting hole 11x6,6U l6,6

IMAGE 4/4: ZR0RF FÜR RECHTSANGESCHLAGENE TÜREN MIT FLUCHTENTRIEGLUNG



Product options

IMAGE 1/1

ORDERING KEY

ZR0			Bolt for safety interlock
	R		For doors hinged on the right
	L		For doors hinged on the left
		F	With emergency release

Article characteristics

Attribute	ZR0L	ZR0R
Dimensions	305 x 193 x 69 mm (H/B/T)	
Housing material	Stahl rostfrei	
Mounting type	screwed	